

# Up With The Chickens

Designed by Larene Smith of The Quilted Button

© 2012 Copyright All Rights Reserved

Featuring the Down on the Farm Collection by Whistler Studios

Size: 43" x 57"

**PATTERN  
TESTED**



Check [www.windhamfabrics.com](http://www.windhamfabrics.com) Free Project section to see if there are any pattern updates before you start your quilt

**WINDHAM FABRICS**

812 Jersey Ave ~ Jersey City, NJ 07310 ~ 201.659.0444 ~ FAX: 201.659.9719  
[www.windhamfabrics.com](http://www.windhamfabrics.com) email: [retail@windhamfabrics.com](mailto:retail@windhamfabrics.com)

# Up With The Chickens

Designed by Larene Smith of The Quilted Button  
 © 2012 Copyright All Rights Reserved  
 Featuring the Down on the Farm Collection by Whistler Studios  
 Size: 43" x 57"

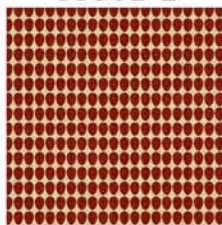
35299-X



35300-X



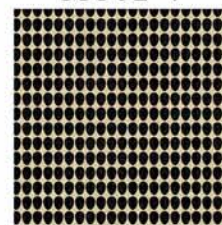
35301-1



35301-3



35301-4



35302-1



35302-5



35303-2



35303-6



35304-X

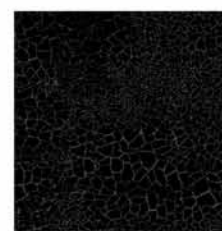


## Crackle Basics

35453-11



35453-21



## Fabric Yardage

- 3/8 Yard 35299-X Multi
- 1/4 Yard 35453-11 Green
- 1-1/8 Yards 35453-21 Black (includes Binding)
- 1/4 Yard 35301-1 Red
- 1/2 Yard 35301-4 Black
- 1/4 Yard 35301-3 Green
- 1/4 Yard 35302-5 Yellow
- 3/8 Yard 35302-1 Red
- 1/4 Yard 35303-2 Blue
- 1/4 Yard 35300-X Multi
- 3/8 Yard 35303-6 Tan
- 1-3/8 Yards 35304-X Multi
- 3-1/2 Yards Backing
- 49" x 63" Batting

## Instructions

- Pre-wash and press all fabric with Mary Ellen's Best Press to reduce bias.
- All seams are sewn with a 1/4" seam allowance.
- All seams are pressed open to reduce bulk.
- Label all fabric when cutting for less confusion.

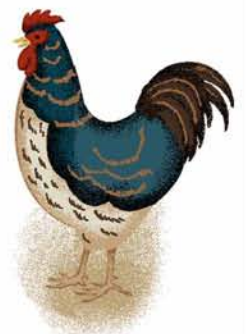


# Up With The Chickens

Page 2

## Step 1 – Preparing the Fabric

1. 35299-X Multi – Fussy Cut (2) 8-1/2" x 12-1/2" rectangles – Block A.
2. Black – Cut as follows:
  - a. Block A – Cut (3) strips at 1-1/2" x WOF – Sub-cut into (4) 1-1/2" x 12-1/2" rectangles and (4) 1-1/2" x 10-1/2" rectangles.
  - b. Block B – Cut (2) strips at 1-1/2" x WOF – Sub-cut into (2) 1-1/2" x 6-1/2" rectangles and (2) 1-1/2" x 14-1/2" rectangles.
  - c. Block C – Cut (5) strips at 1-1/2" x WOF.
  - d. Inner Border – Cut (4) strips at 2-1/2" x WOF.
  - e. Binding – Cut (6) strips at 2-1/2" x WOF.
3. Green – Cut (5) strips at 1-1/2" x WOF – Middle Border.
4. 35301-1 Red – Cut as follows:
  - a. Block A – Cut (2) strips at 2-1/2" x WOF – Sub-cut into (4) 2-1/2" x 10-1/2" rectangles.
  - b. Block C – Cut (1) strip at 1-1/2" x WOF.
5. 35301-4 Black – Cut (1) strip at 14-1/2" x WOF – Sub-cut into (4) 14-1/2" x 2-1/2" rectangles – Block A.
6. 35302-5 Yellow – Fussy Cut (8) 2-1/2" squares – Block A.
7. 35302-1 Red – Cut (1) strip at 12-1/2" x WOF – Sub-cut into (1) 12-1/2" x 6-1/2" rectangle – Block B.
8. 35303-2 Blue – Cut (1) strip at 8-1/2" x WOF – Sub-cut into (4) 8-1/2" x 6-1/2" rectangles – Block C.
9. 35301-3 Green – Cut (4) strips at 1-1/2" x WOF – Block C.
10. 35300-X Multi – Cut (1) strip at 4-1/2" x WOF – Sub-cut into (2) 4-1/2" x 6-1/2" rectangle – Block C.
11. 35303-6 Tan – Fussy Cut (16) 2-1/2" squares – Block C
12. 35304-X Multi – Cut the Outer Border as follows:
  - a. Cut (2) strips at 4-3/4" x WOF – Sub-cut into (2) 4-3/4" x 34-1/2" rectangles for the TOP and BOTTOM
  - b. Cut (3) strips at 4-3/4" from RAW EDGE to RAW EDGE – Fussy cut and sew them together at the 4-3/4" edge then sub-cut into (2) 4-3/4" x 57" rectangles for the SIDES.

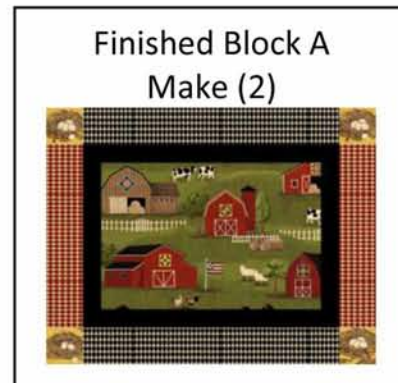


# Up With The Chickens

Page 3

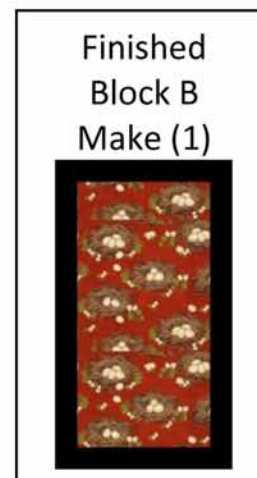
## Step 2 – Sewing Block A

13. Sew (1) Black 1-1/2" x 12-1/2" rectangle to the top and bottom of (1) 35299-X Multi 8-1/2" x 12-1/2" rectangle.
14. Sew (1) Black 1-1/2" x 10-1/2" rectangle to each side of the piece just completed to measure 14-1/2" x 10-1/2".
15. Sew (1) 35301-4 Black 2-1/2" x 14-1/2" rectangle to the top and bottom of the piece just completed.
16. Sew (1) 35302-5 Yellow 2-1/2" square to each 2-1/2" edge of (1) 35301-1 Red 2-1/2" x 10-1/2" rectangle – Make (2) and sew to each side to finish Block A at 18-1/2" x 14-1/2".
17. Repeat from Instruction No. 13 until completed a total of TWO of Block A and set aside for use later.



## Step 3 – Sewing Block B

18. Sew (1) Black 1-1/2" x 6-1/2" rectangle to the top and bottom of (1) 35302-1 Red 6-1/2" x 12-1/2" rectangle.
19. Sew (1) Black 1-1/2" x 14-1/2" rectangles to each side to finish Block B at 8-1/2" x 14-1/2" – Make (1) and set aside for use later.



## Step 4 – Sewing Block C

20. Sew (1) Black 1-1/2" strip to (1) 35301-3 Green 1-1/2" strip to make a new strip at 2-1/2" x WOF – Make (4) then sub-cut into:
  - a. (8) 2-1/2" x 6-1/2" rectangles (SET A)
  - b. (8) 2-1/2" x 8-1/2" rectangles (SET B)
21. Sew (1) Black 1-1/2" strip to (1) 35301-1 Red 1-1/2" strip to make a new strip at 2-1/2" x WOF – Sub-cut into (4) 2-1/2" x 4-1/2" rectangles (SET C).
22. Sew (1) 35303-6 Tan 2-1/2" square to each 2-1/2" edge of (1) of SET A to make a new rectangle at 10-1/2" x 2-1/2" – Make (8) – Label SET A.
23. Sew (1) of SET B to the 8-1/2" edge of (1) 35303-2 Blue 6-1/2" x 8-1/2" rectangle with the GREEN towards the INSIDE to make a new rectangle at 10-1/2" x 8-1/2" – Make (4) – Label "BLUE".
24. Sew (1) of SET C to the 4-1/2" edge of (1) 35300-X Multi 4-1/2" x 6-1/2" rectangle with the BLACK towards the INSIDE to make a new rectangle at 10-1/2" x 4-1/2" – Make (2) – Label "RED".
25. Sew Block C as follows from TOP to BOTTOM to make a new rectangle at 10-1/2" x 28-1/2" – Make (2) – refer to Finished Block C: SET A, BLUE, SET A, RED, SET A, BLUE, SET A



# Up With The Chickens

Page 4

## Step 5 – Sewing the Quilt Center

**NOTE:** The center is sewn together with a *PARTIAL SEAM* of which Block A and Block C surround Block B as shown in the cover picture – Refer to Example A for direction.

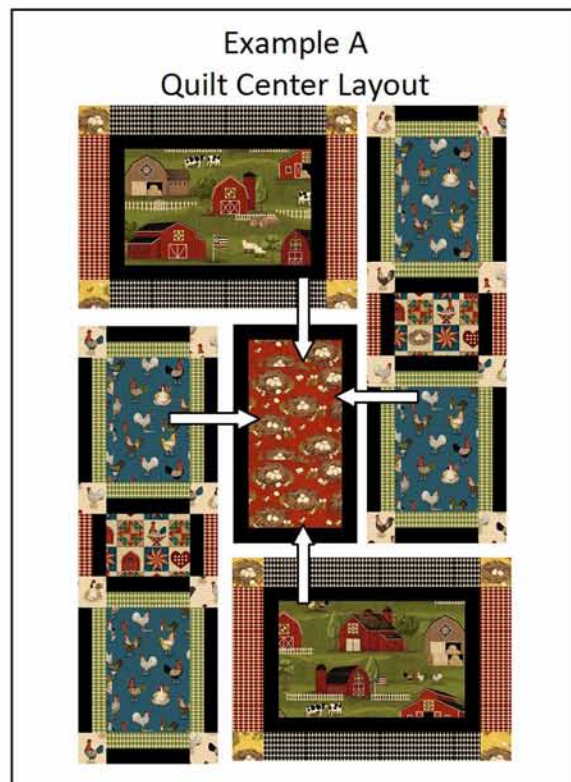
26. Begin at the LOWER RIGHT corner and sew Block A to Block B with a *PARTIAL SEAM*. This is the only partial seam and will be finished last.
27. *WORKING CLOCKWISE* sew Block C to the LEFT of Block B all the way across.
28. Sew Block A to the TOP LEFT all the way across.
29. Sew Block C to the TOP RIGHT SIDE all the way across.
30. Finish the partial seam at the LOWER RIGHT to finish the center at 28-1/2" x 42-1/2".

## Step 6 – Sewing on the Borders

31. Inner Border ----- Sew the Black 2-1/2" strips together at the 2-1/2" edge then sub-cut into (2) 2-1/2" x 32-1/2" rectangles (Top and Bottom) and (2) 2-1/2" x 42-1/2" rectangles (Sides).
32. Sew on the SIDES and then the TOP and BOTTOM to finish at 32-1/2" x 46-1/2".
33. Middle Border ----- Sew the Green 1-1/2" strips together at the 1-1/2" edge then sub-cut into (1) 1-1/2" x 46-1/2" rectangles (Sides) and (2) 1-1/2" x 34-1/2" rectangles (Top and Bottom).
34. Sew on the SIDES and then the TOP and BOTTOM to finish at 34-1/2" x 48-1/2".
35. Outer Border ----- Sew the 4-3/4" x 34-1/2" rectangles to the TOP and BOTTOM then sew the 4-3/4" x 57" rectangles to the SIDES to finish the quilt top at 43" x 57".

## Step 7 – Finishing the Quilt

36. Layer the backing, batting and quilt top and quilt as desired.
37. Using the Black 2-1/2" strips sew on the binding to finish the quilt.



**To ask questions about this quilt or see more of  
Connect Larene at: [larene@thequiltedbutton.com](mailto:larene@thequiltedbutton.com)  
Visit her website to see her other great patterns:  
[www.thequiltedbutton.com](http://www.thequiltedbutton.com)**

**Be sure to visit [www.windhamfabrics.com](http://www.windhamfabrics.com) to see the complete collection  
and to download other Free Projects**

**WINDHAM FABRICS**