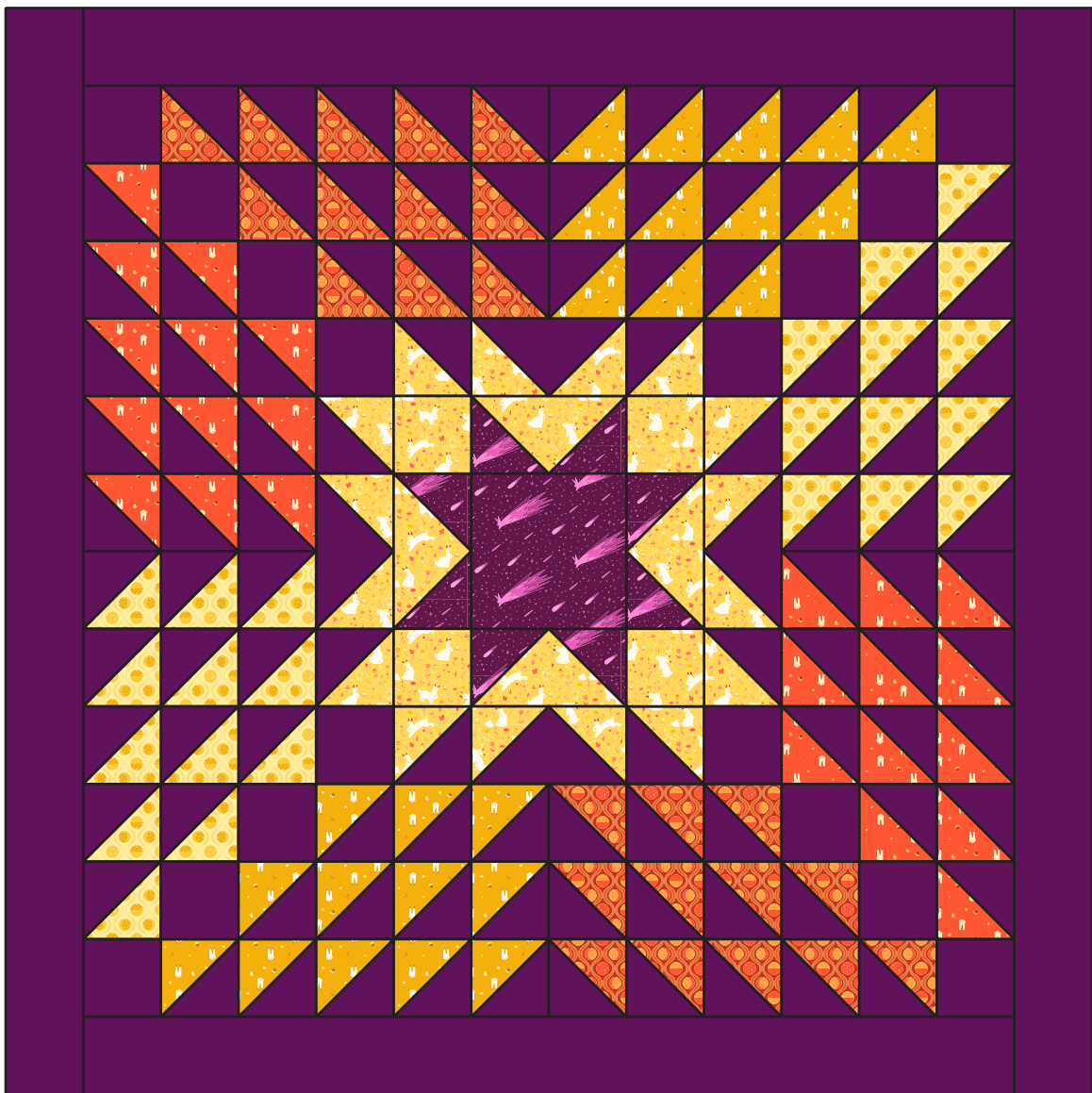




Sew scatterBRAINED

a quilt pattern by felice regina

## sunset star



## materials

1/3 yard - 41878-3 Flare  
1/3 yard - 41879-3 Flare  
1/3 yard - 41878-4 Sun Spot  
1/3 yard - 41879-6 Spark  
½ yard - 41882-4 Sun Spot  
¼ yard - 41880-5 Dusk  
2¼ yards - 40171-37 Red-Royal  
3½ yards for backing fabric  
½ yard for binding fabric (41878-5 Dusk)  
63" x 63" batting

## pattern info

Seam allowances are ¼" unless otherwise stated.

All measurements are width x height.

Yardage based on 42" wide fabric.

**Finished Size:** 56" x 56"

## cutting

### **40171-37 Red-Royal:**

- (4) 10" x WOF strips and subcut
  - (13) 10" squares
  - (4) 8½" x 4½"
- (2) 4½" x WOF strips and subcut
  - (16) 4½" squares
- (6) 4½" x WOF strips for outer border

### **41882-4 Sun Spot:**

- (1) 10" x WOF strip and subcut
  - (1) 10" square
  - (4) 8½" x 4½"
  - (3) 4½" squares
- (1) 4½" x WOF strip and subcut
  - (9) 4½" squares

### **41880-5 Dusk:**

- (1) 8½" square
- (8) 4½" squares

### **41879-3 Flare, 41878-4 Sun Spot, 41879-6 Spark, 41882-4 Sun Spot**

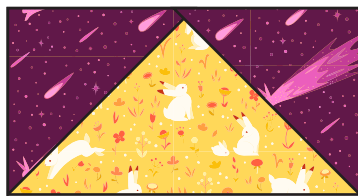
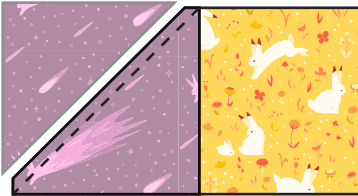
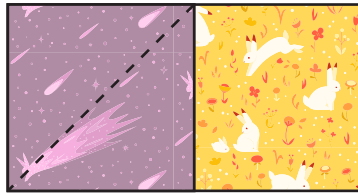
*Cut the following from each print:*

- (1) 10" x WOF strip and subcut
- (3) 10" squares

## make the center star

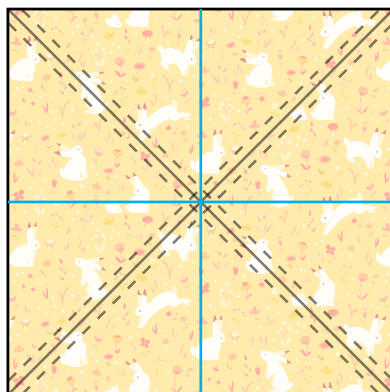
**1.** With a water soluble marker, draw a diagonal line on the wrong side of each of the (8) 41880-5 Dusk 4½" squares.

**2.** Place a 8½" x 4½" 41882-4 Sunspot piece and 4½" square from the previous step right sides together (RST) as illustrated. Pin and sew along the diagonal line. Trim the seam allowance to ¼" and press seam towards the darker fabric. Repeat with a second 4½" square on the opposite side to make a flying geese unit. Make (4) total flying geese units.

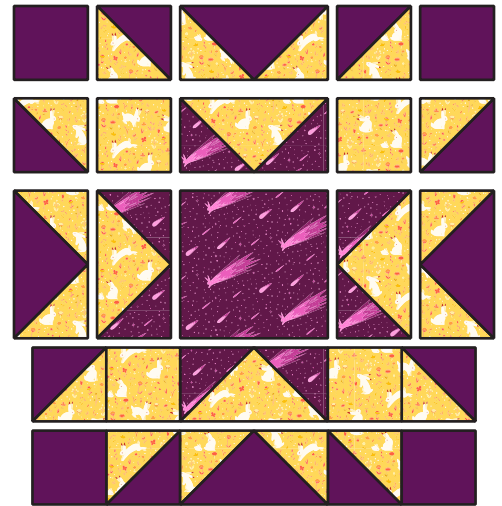


**3.** Repeat step 1-2 with the (4) 8½" x 4½" 40171-37 Red-Royal pieces and (8) 41882-4 Sunspot 4½" squares to make (4) flying geese units.

**4.** Draw two diagonal lines on the wrong side of the 41882-4 Sun Spot 10" square. Place the square RST with (1) 40171-37 Red-Royal 10" square and pin in place. Sew a seam ¼" on either side of each diagonal line. Cut the square in quarters, then cut each quarter along the marked diagonal line to yield (8) half-square triangle (HSTs). Press seam towards darker fabric and trim each HST to 4½" square.



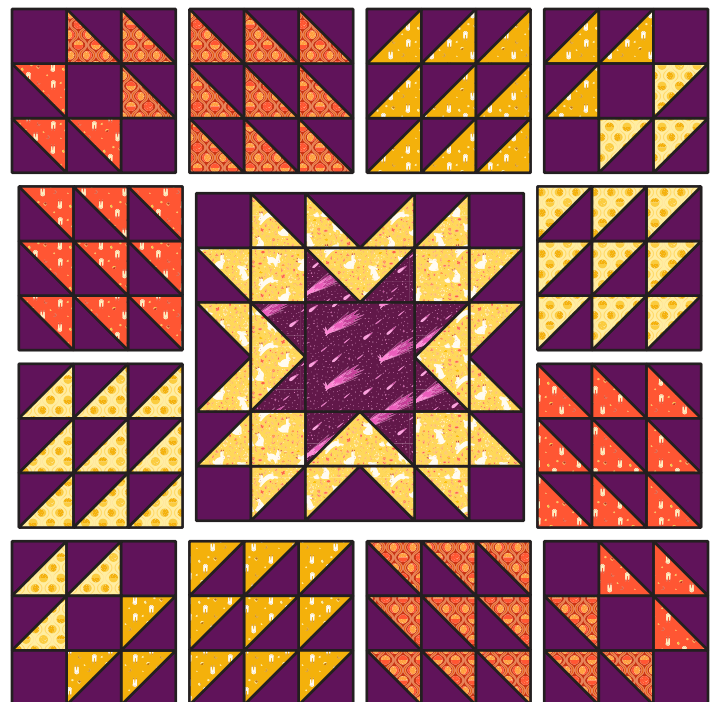
**5.** Using the flying geese from steps 2 and 3, the HSTs from step 4, (4) 40171-37 Red-Royal 4½" squares, (4) 41882-4 Sun Spot 4½" squares, and the 8½" 41880-5 Dusk square, arrange the center star as illustrated. Sew the pieces by rows, pressing the seams in alternating directions. Piece the Rows together and press.



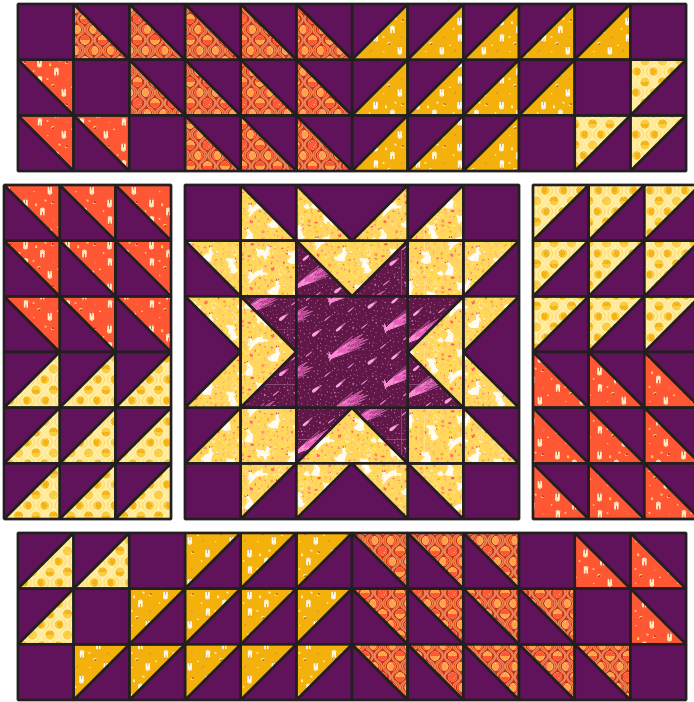
## piece the quilt top

**6.** Repeat step 4, pairing each print 10" square with a 10" 40171-37 Red-Royal square. You will make (24) 4½" HSTs in each print for a total of (96) HSTs.

**7.** Arrange the 4½" HSTs and 40171-37 Red-Royal squares into (12) blocks made up of (9) squares as illustrated. Press seams open.



**8.** Join the blocks from the previous step and the center star as illustrated to form (3) rows, pinning at the seam intersections. Press seams open. Sew the rows together in the same manner and press seams open.



**9.** Sew the (4) 40171-37 Red-Royal 4½" WOF strips together, end to end and press. Subcut (2) 48½" pieces and (2) 56½" pieces. Sew the (2) shorter pieces to the top and bottom of the quilt top and press. Sew the longer pieces to the left and right of the quilt top and press.

## finish the quilt

**10.** Make your quilt sandwich with your quilt top, batting, and backing. Baste the layers together, making sure everything is smooth.

**11.** Quilt as desired.

**12.** For your binding, cut (6) 2½" width of fabric strips and sew end-to-end. Bind by hand or machine as desired.

# Quilt Diagram

