

INTERMEDIATE  
SKILL

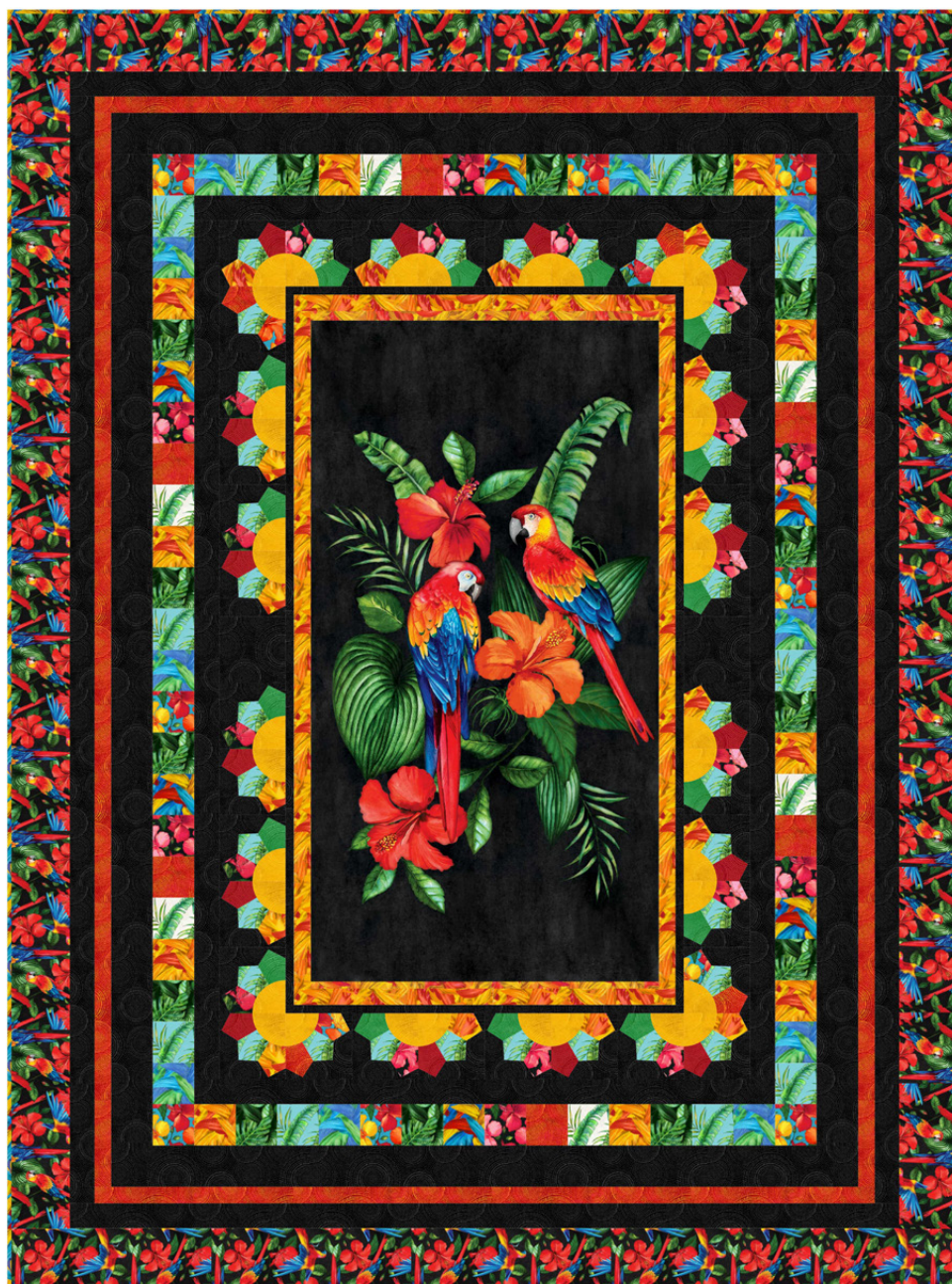
# Feathered Fanfare Macaws

Designed by Wendy Sheppard

Featuring *Tropical Paradise* by Whistler Studios

SIZE: 57" x 77"

NEEDLE TURN APPLIQUÉ AND CURVED PIECING TECHNIQUES REQUIRED



THIS IS A DIGITAL REPRESENTATION OF THE QUILT TOP, FABRIC MAY VARY.








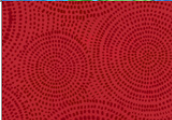


**PLEASE NOTE:** BEFORE MAKING YOUR PROJECT, CHECK FOR ANY PATTERN UPDATES AT [WINDHAMFABRICS.COM](http://WINDHAMFABRICS.COM)'S FREE PROJECTS SECTION.FREE  
PROJECT



# Feathered Fanfare Macaws

**PROJECT DISCLAIMER:** Every effort has been made to ensure that all projects are error free. All the information is presented in good faith, however, no warranty can be given nor results guaranteed. Therefore, we assume no responsibility nor damages that may occur when referring to this pattern. When errors are brought to our attention, we make every effort to correct and post a revision as soon as possible. Please check [windhamfabrics.com](http://windhamfabrics.com) for pattern updates and test the pattern prior to making the project. Test templates first, before cutting all the pieces. Free projects are not for resale.

WOF=WIDTH OF FABRIC

KEY	FABRIC	SKU	YD	CUTTING INSTRUCTIONS
A		RADIANCE 53927-60 Black	2-1/4	<p>Inner Border 2: (4) 1" x WOF strips. Piece strips via short ends and subcut (2) 1" x 43-1/2" strips and (2) 1" x 24-1/2" strips.</p> <p>Inner Border 3: (5) 4-1/2" x WOF strips. Subcut (38) 4-1/2" squares.</p> <p>Inner Border 4: (5) 2" x WOF strips. Piece strips via short ends and subcut (2) 2" x 52-1/2" and (2) 2" x 35-1/2" strips.</p> <p>Inner Border 6: (6) 3" x WOF strips. Piece strips via short ends and subcut (2) 3" x 60-1/2" and (2) 3" x 45-1/2" strips.</p> <p>Inner Border 8: (6) 2" x WOF strips. Piece strips via short ends and subcut (2) 2" x 67-1/2" and (2) 2" x 50-1/2" strips.</p>
B		53925P-1 Black	1 Panel	Center Design: (1) 21-1/2" x 41-1/2" rectangle.
C		53927-1 Black	1	Outer Border: (7) 4" x WOF strips. Piece strips via short ends and subcut (2) 4" x 70-1/2" and (2) 4" x 57-1/2" strips.
D		53930-1 Black	1/4	Patch Border: (1) 3" x WOF strip. Subcut (14) 3" squares.
E		RADIANCE 53727-16 Green	1/4	Dresden Border: (16) Template 2.
F		53929-1 Black	1/4	<p>Patch Border: (1) 3" x WOF strips. Subcut (6) 3" squares.</p> <p>Dresden Border: (16) Template 2.</p>
G		53931-7 Blue	1/8	Patch Border: (1) 3" x WOF strip. Subcut (10) 3" squares.
H		RADIANCE 53727-3 Red	1/4	Dresden Border: (16) Template 2.
I		53931-6 Orange	1/2	<p>Inner Border 1: (2) 1-1/2" x 41-1/2" and (2) 1-1/2" x 23-1/2" strips.</p> <p>Dresden Border: (16) Template 2.</p> <p>Patch Border: (1) 3" x WOF strip. Subcut (10) 3" squares.</p>
J		53932-3 Ivory	1/8	Patch Border: (1) 3" x WOF strip. Subcut (6) 3" squares.

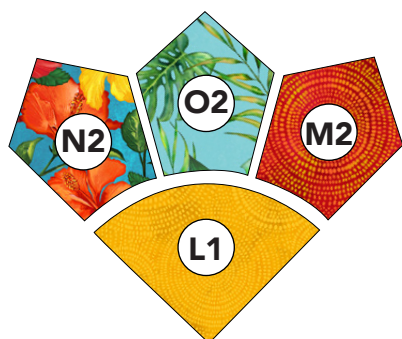


# Feathered Fanfare Macaws

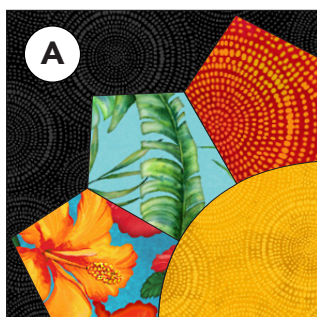
KEY	FABRIC	SKU	YD	CUTTING INSTRUCTIONS
K		53931-5 Multi	3/4	Patch Border: (1) 3" x WOF strip. Subcut (6) 3" squares. BINDING: (8) 2-1/4" x WOF strips. Piece strips via short ends.
L		RADIANCE 53727-10 Mustard	1/3	Dresden Border: (36) Template 1.
M		RADIANCE 53727-4 Fiery	1/2	Dresden Border: (4) Template 2. Patch Border: (1) 3" x WOF strip. Subcut (6) 3" squares. Inner Border 7: (6) 1-1/2" x WOF strips. Piece strips via short ends and subcut (2) 1-1/2" x 65-1/2" and (2) 1-1/2" x 47-1/2" strips.
N		53929-4 Cyan	1/4	Dresden Border: (4) Template 2. Patch Border: (1) 3" x WOF strip. Subcut (8) 3" squares.
O		53932-2 Turquoise	1/2	Dresden Border: (36) Template 2. Patch Border: (1) 3" x WOF strip. Subcut (10) 3" squares.
		Backing	3-3/4	Batting 65" x 85" piece.

## DRESDEN BLOCK ASSEMBLY

- 1. Arch Unit:** Sew together (1) **N** and (1) **M** Template 2 to the opposite long sides of (1) **O** Template 2 as shown. Use curved piecing technique to add **L** Template 1 to **N/O/M** arch unit.
- 2. Dresden Block:** Position **N/O/M** Dresden unit on (1) **A** 4-1/2" square, aligning raw edges. Use needle turn appliqué to secure Template 2 arch points to the background square. Baste layers together along straight edges of the block.
- 3.** Repeat steps 1 and 2 to make **I/O/H** and **F/O/E** dresden blocks as shown.

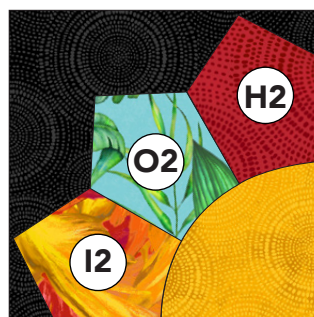


**N/O/M UNIT**



MAKE (4) BLOCKS

**I/O/H UNIT**



MAKE (16) BLOCKS

**F/O/E UNIT**



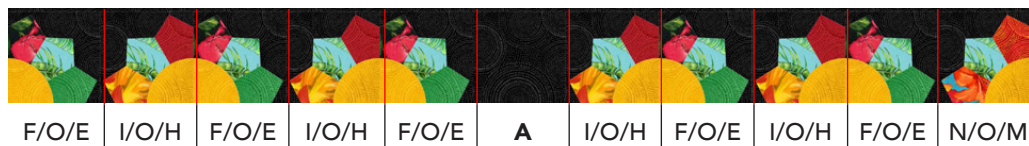
MAKE (16) BLOCKS



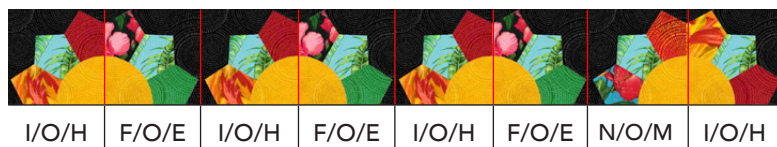
# Feathered Fanfare Macaws

## BORDER ASSEMBLY

**4. Dresden Borders:** Sew together (10) Dresden blocks and (1) **A** 4-1/2" square as shown. Make (2).  
*Note proper orientation of dresden blocks.*



**5.** Sew together (8) Dresden blocks as shown. Make (2).  
*Note proper orientation of dresden blocks.*



**6. Patch Borders:** Sew together (22) 3" squares as shown. Make (2).



**7.** Sew together (16) 3" squares as shown. Make (2).



## QUILT ASSEMBLY *Refer to page 4 for Quilt Diagram*

**8. Inner Border 1:** Sew (1) **I** 1-1/2" x 41-1/2" strip to sides of quilt top, followed by (1) **I** 1-1/2" x 23-1/2" strip to top and bottom of **B** Panel.

**9. Inner Border 2:** Sew (1) **A** 1" x 43-1/2" strip to sides of quilt top, followed by (1) **A** 1" x 24-1/2" strip to top and bottom of quilt top.

**10. Dresden Border:** Sew (11) piece Dresden border to sides of quilt top, followed by (8) piece Dresden border to top and bottom of quilt top. *Note proper rotation of borders.*

**11. Inner Border 4:** Sew (1) **A** 2" x 52-1/2" strip to sides of quilt top, followed by (1) **A** 2" x 35-1/2" strip to top and bottom of quilt top.

**12. Patch Border:** Sew (22) Patch border to sides of quilt top, followed by (16) Patch border to top and bottom of quilt top. *Note proper rotation of borders.*

**13. Inner Border 6:** Sew (1) **A** 3" x 60-1/2" strip to sides of quilt top, followed by (1) **A** 3" x 45-1/2" strip to top and bottom of quilt top.

**14. Inner Border 7:** Sew (1) **M** 1-1/2" x 65-1/2" strip to sides of quilt top, followed by (1) **M** 1-1/2" x 47-1/2" strip to top and bottom of quilt top.

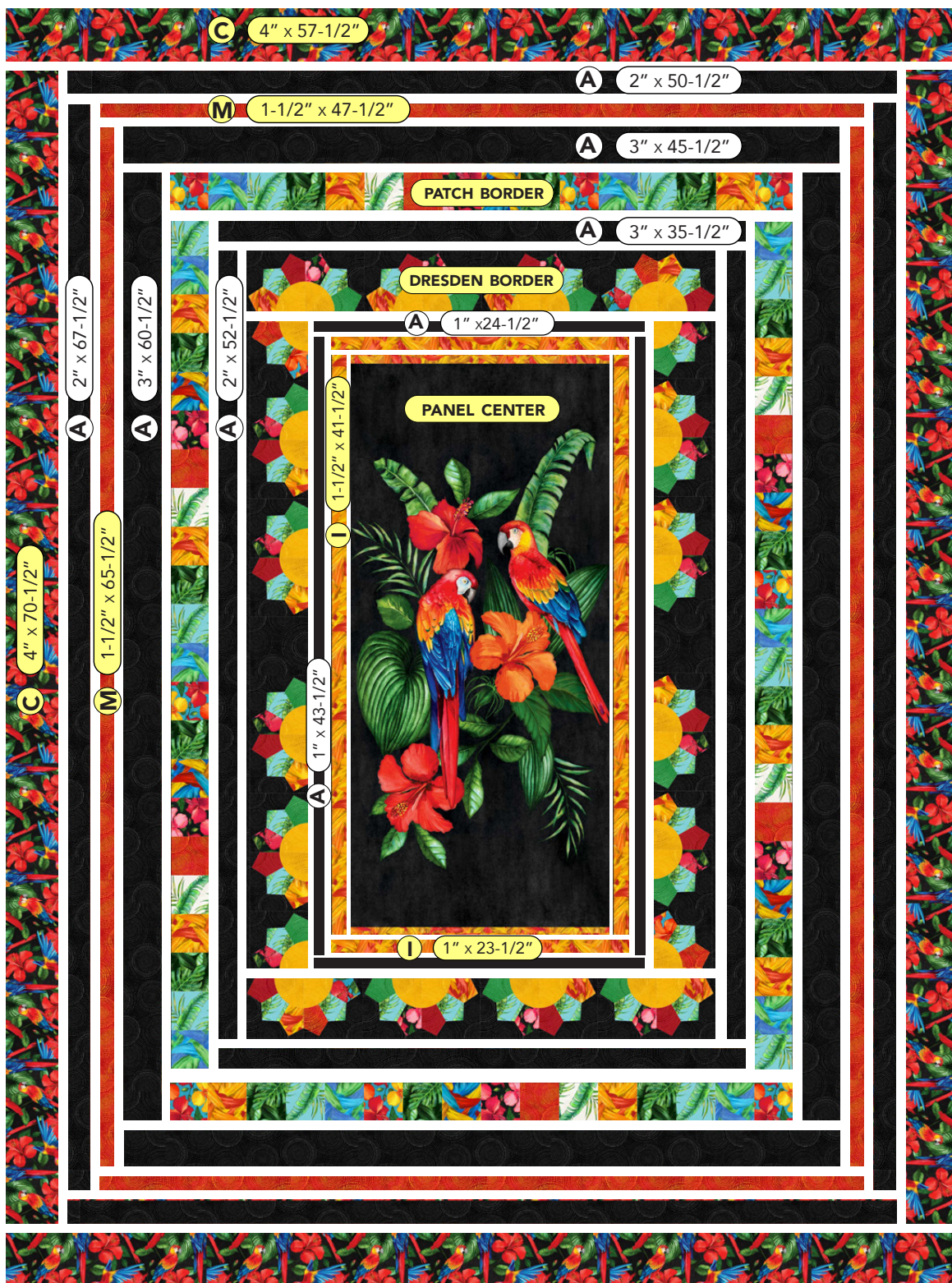
**15. Inner Border 8:** Sew (1) **A** 2" x 67-1/2" strip to sides of quilt top, followed by (1) **A** 2" x 50-1/2" strip to top and bottom of quilt top.



# Feathered Fanfare Macaws

**16. Outer Border:** Sew (1) **C** 4" x 70-1/2" strip to sides of quilt top, followed by (1) **C** 4" x 57-1/2" strip to top and bottom of quilt top.

**FINISHING:** Layer quilt top, batting and backing together to form quilt sandwich. Baste and quilt as desired. Bind using **K** 2-1/4" strips.



Pattern also available in our Tropical Paradise, Flamingos colorway!



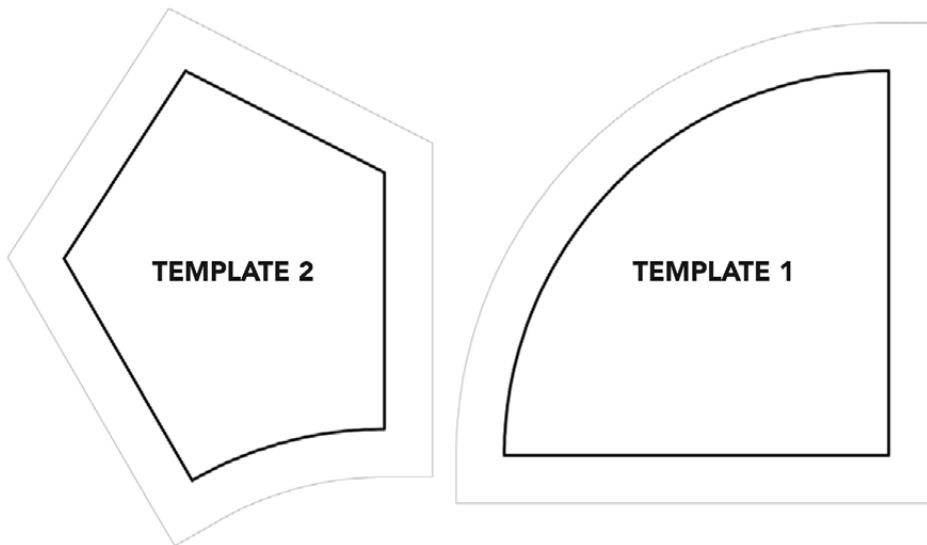
Feathered Fanfare Flamingos



# Feathered Fanfare Macaws

## DRESDEN BLOCK TEMPLATES

PRINT TEMPLATES AT 100% SCALE



BLOCK SAMPLE FORMATION

