

"Tea 4 Two"

Apron & Table Round

Designed by Bethany Fuller

Featuring the Tea for Two Collection by Whistler Studio



WINDHAM FABRICS

812 Jersey Ave ~ Jersey City, NJ 07310 ~ 201.659.0444 ~ FAX: 201.659.9719
www.windhamfabrics.com email: retail@windhamfabrics.com

"Tea 4 Two"

Apron & Table Round

Designed by Bethany Fuller

Featuring the Tea for Two Collection by Whistler Studio

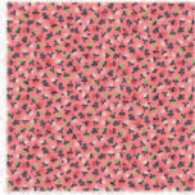
Fabric Requirements

Apron:

- 2/3 yd Black Focus (31748-1)
- 1/4 yd Small Pink Flower (31753-5)
- 3/8 yd Large Black Flower (31755-1)
- 3/8 yd Medium Pink Flower (31758-5)
- 1/4 yd Green Check for Ruffle on Apron (31752-6)
- 1 yd lining



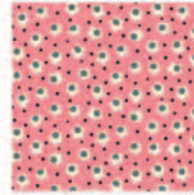
31748-1



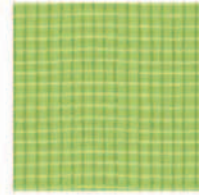
31753-5



31755-1



31758-5



31752-6

Tablemat:

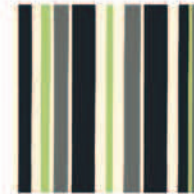
- 2/3 yd Black Focus (31748-1)
- 3/8 yd Gray Teacups (31749-4)
- 1/3 yd Black/Green Stripe (31754-1)
- 5" squares of 3 reds and 1 green
- 2/3 yd Backing



31748-1



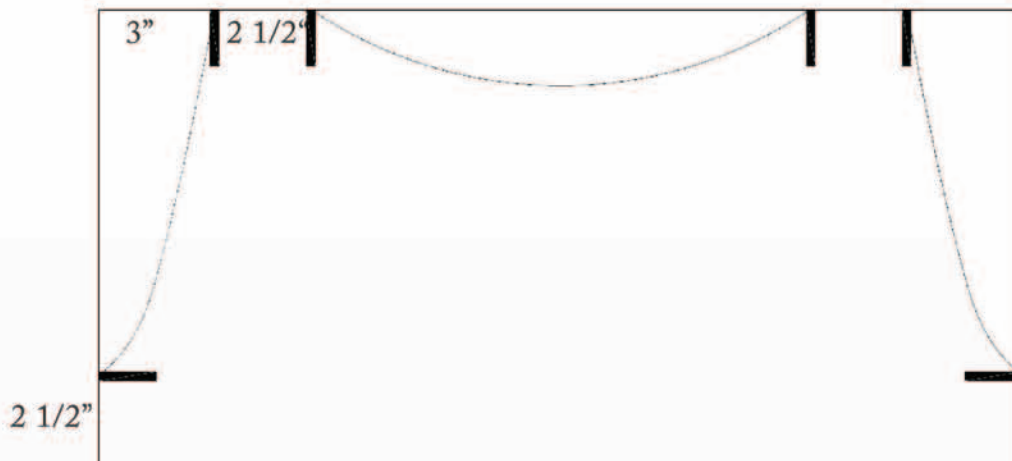
31749-4



31754-1

To Make Apron:

From Large Black Flower AND lining, cut a 12" x 24" rectangle. Place right sides together. Mark according to diagram below. Cut out arm and neck areas.



"Tea 4 Two"

Apron & Table Round

Page 2

From Medium Pink Flower, cut 6 – 2 ½" strips. Sew 2 strips together, right sides together and turn. Repeat to make 3 ties. Press and finish one end of 2 of the ties for the sides. Choose length for neck strip based on your shape.

From Green Check, cut a 2 ½" x 24" strip. Fold in half lengthwise, right sides out and press. Baste along raw edges, 1/8" from edge. Gather to fit along neckline. Unfinished ends will be sewn into shoulder seams. Baste ruffle to the front side along neckline.

Pin neck strip and side ties with raw edges matching the edge of the front. Sandwich, right sides together with lining piece. Straps will be inside the layers. Sew ties and ruffle into seams. Sew front and back together, with a ¼" seam, leaving bottom open. Trim seam allowances to 1/8" and turn right sides out. Top-stitch edges.

From Small Pink Flower, cut 4 – 6" squares.

From Green Check, cut 2 – 2 ½" x 12" rectangles. Make ruffles as you did above. Pin each ruffle to one edge of a 6" pink square on the right side. Baste onto edge. Place a second square, face down on top of this and stitch ¼" from the edge. Leave a small opening to turn pocket right side out. Press well. Repeat for second pocket.

From Black Focus AND lining, cut a 20" x 36" rectangle. With right sides together, sew ¼" from the edge on 3 sides. Leave a long side unfinished. Turn right sides out and press. Top-stitch three sewn sides.

Position and top-stitch pockets in desired placement on skirt. Stitch sides and bottom, leaving to top edge. Back-stitch at top edges to secure.

Baste 1/8" from edge of unfinished side of skirt. Gather skirt to fit bottom edge of bodice.

From Green Check, cut a 1" x 24" strip. Fold short ends in ¼", then fold in half lengthwise, right side out. Press well. Pin to front bottom edge of bodice, to be sewn into the seam.

Pin bodice and skirt together, raw edges matching, front sides together. Sew ¼" seam. Zig-zag or serge raw edge of this seam.



ENJOY!



WINDHAM FABRICS

"Tea 4 Two"

Apron & Table Round

Page 3

To Make Tablemat:

Cut a circle with a 22" diameter from the Black Focus and Backing fabrics.

Trace flower image 3 times on fusible web. Iron 1 each on the wrong side of 3 red squares and cut out.

Trace leaf image 3 times on fusible web. Iron on the wrong side of the green and cut out.

Trace an 11" circle on fusible web. Iron on wrong side of Gray Teacups.

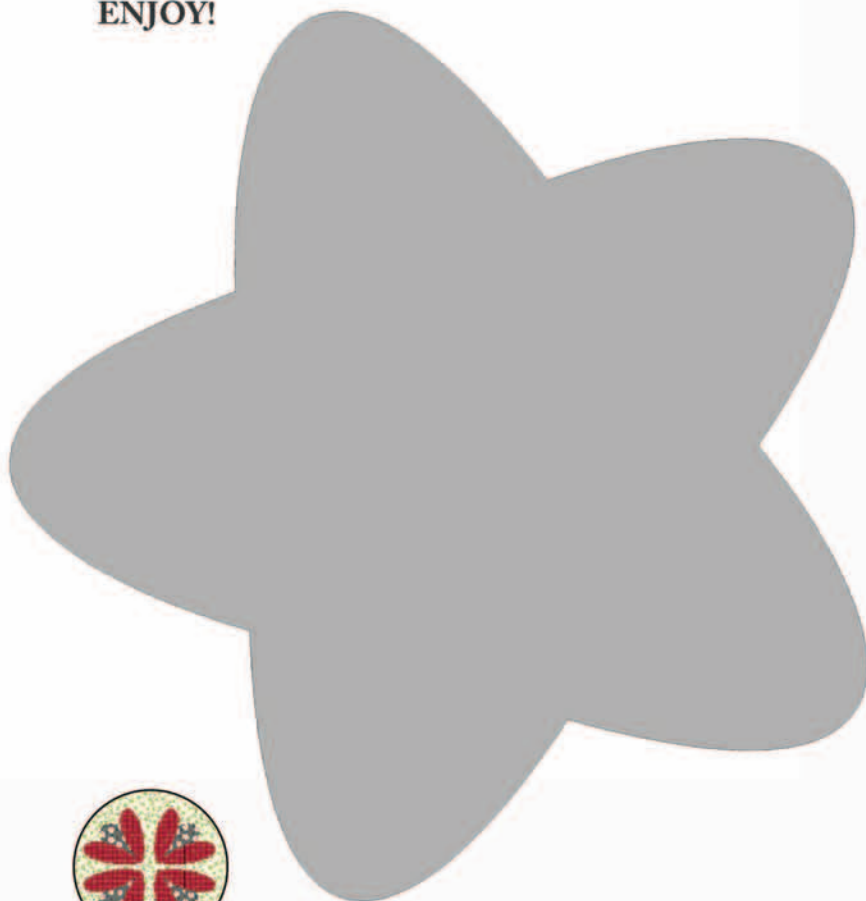
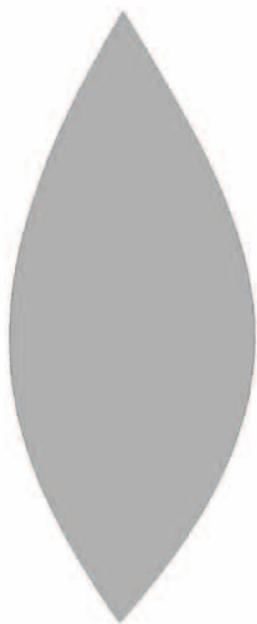
Iron 11" circle onto center of Black Focus. Stitch around edge with a tight zig-zag stitch.

Iron Flowers and Leaves to center. Stitch around edges with a tight zig-zag stitch.

From Black and Green Stripe, cut 3 – 3" strips. Sew end to end. Press in half lengthwise, with right sides out. Baste 1/8" from raw edges. Gather to fit around the circumference of the circle. Pin to the Black Focus circle, with the ruffle toward the center, raw edges matching. Baste together.

Place Backing fabric face down on front. Stitch 1/4" from edges, leaving 4" unsewn. Turn tablemat right side out and press. Stitch opening closed and top-stitch around edge.

ENJOY!



Be sure to visit www.windhamfabrics.com to see the complete collection
and to download this and other Free Projects

WINDHAM FABRICS