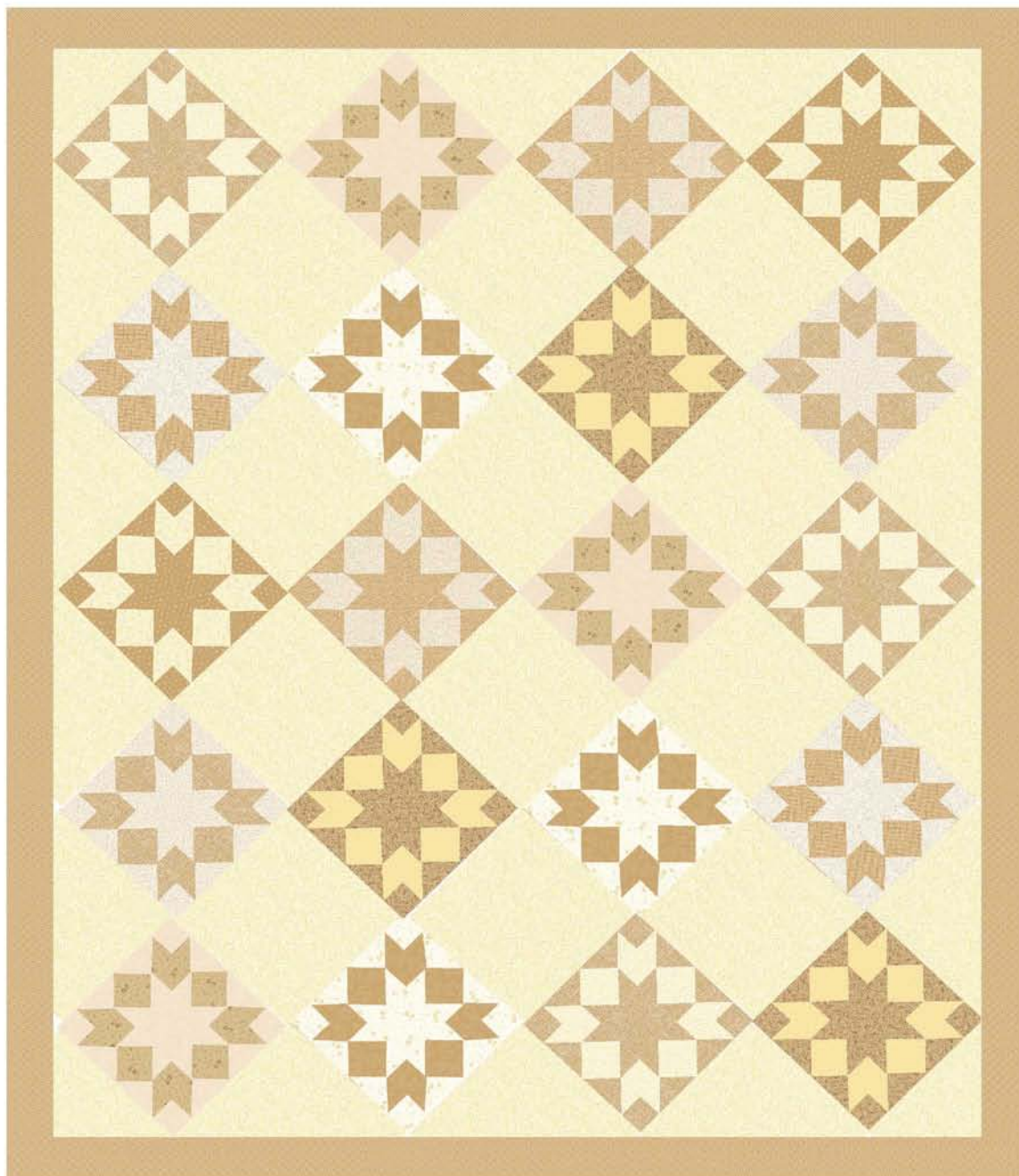


"Starlight"

Designed by Audrie Bidwell
Featuring the Butter Pecan collection by Whistler Studios
Finished Size: 76 x 93"



Check www.windhamfabrics.com Free Project section to see if there are any pattern updates before you start your quilt

WINDHAM *W* **FABRICS**

812 Jersey Ave ~ Jersey City, NJ 07310 ~ 201.659.0444 ~ FAX: 201.659.9719
www.windhamfabrics.com email: retail@windhamfabrics.com

“Starlight”

Page 2



39040-1



39040-3



39041-1



39042-1



39042-4



39043-1



39044-4



39044-5



39045-1



39046-1



39046-4



39047-2



39047-4



39048-4



39048-5



39049-3

Fabric requirements

39040-1 Caramel 1/4 yard
39040-3 Latte 1/2 yard
39041-1 Caramel 1/3 yard
39042-1 Caramel 1/3 yard
39042-4 Honey 1/4 yard
39043-1 Caramel 1/4 yard
plus 1 1/4 yard for border and binding
39044-4 Honey 1/4 yard
39044-5 Cream 1/3 yard
39045-1 Caramel 3/4 yard
39046-1 Caramel 1/2 yard
39046-4 Honey 1/4 yard
39047-2 Mocha 1/4 yard
39047-4 Honey 1/2 yard
39048-4 Honey 2 3/4 yards background
39048-5 Cream 1/3 yard
39049-3 Latte 1/4 yard

Fabric of your choice for backing 5 1/4 yards

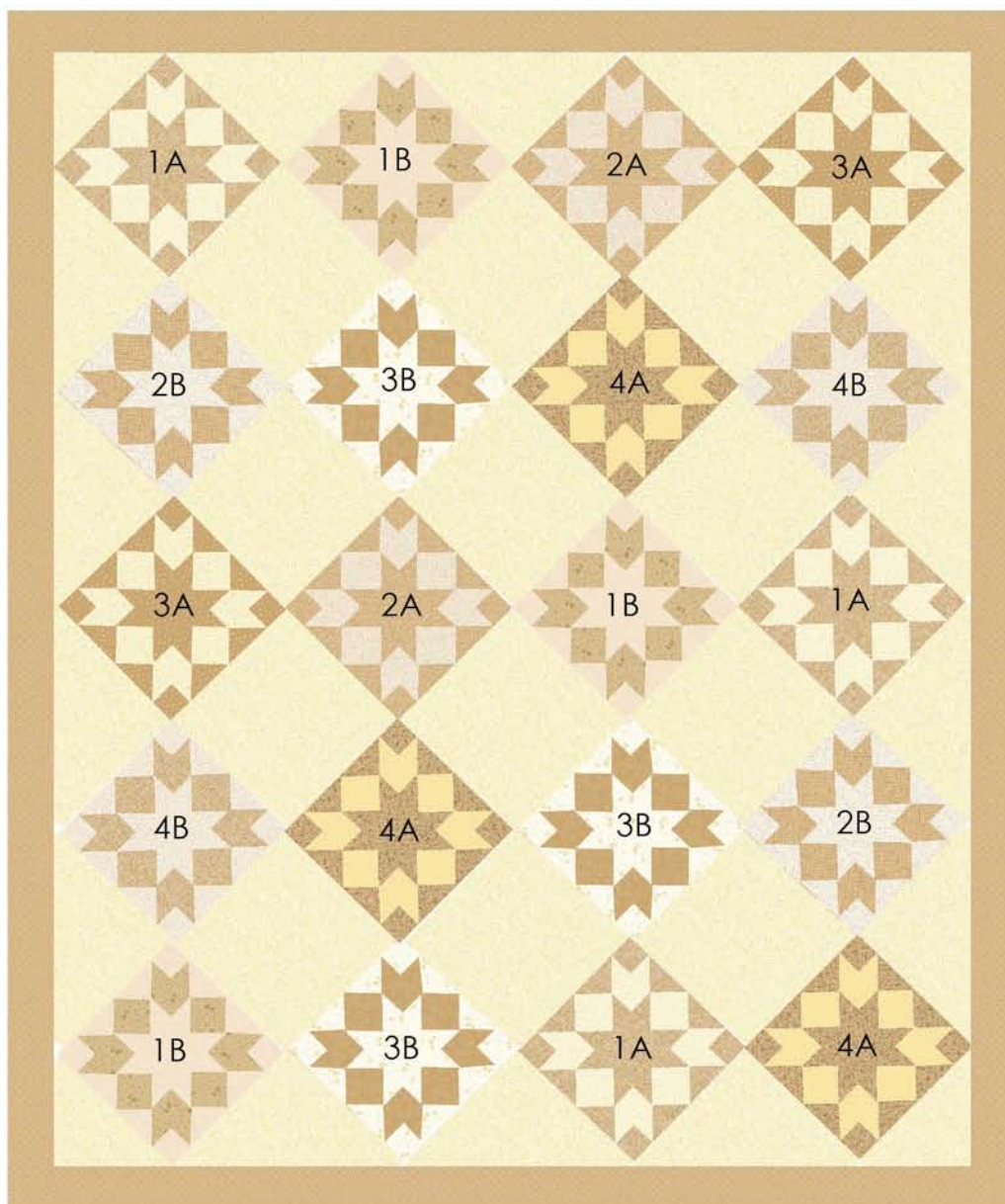
“Starlight”

Page 3

Instructions

This quilt is made up of one pieced block in two value variations: **Block A** (a block with a dark center and dark edges) and **Block B** (a block with a light center and light edges) plus a background block (yellow).

There are 10 pieced blocks of each value variation (20 pieced blocks total). Within those 10 blocks of each value, there are 4 fabric variations of each block (Blocks 1A, 2A, 3A, and 4A and 1B, 2B, 3B and 4B). This will all be detailed in the pattern. Use the numbered quilt diagram below to keep track of which block is which when piecing together, if you desire.



“Starlight”

Page 4

Cutting Instructions

Block A

For *each* pieced block (with dark edge and center)

From dark fabric, cut:

4 squares, 2.5" x 2.5"

1 square, 4.5" x 4.5"

8 squares, 3 3/8" x 3 3/8"

4 squares, 2 7/8" x 2 7/8"

From light fabric, cut:

4 squares, 2.5" x 2.5"

2 squares, 5.25" x 5.25"

4 squares, 2 7/8" x 2 7/8"

Block B

For *each* pieced block (with light edge and center)

From light fabric, cut:

4 squares, 2.5" x 2.5"

1 square, 4.5" x 4.5"

8 squares, 3 3/8" x 3 3/8"

4 squares, 2 7/8" x 2 7/8"

From dark fabric, cut:

4 squares, 2.5" x 2.5"

2 squares, 5.25" x 5.25"

4 squares, 2 7/8" x 2 7/8"

For background

12 squares, 12.5" x 12.5"

7 squares, 18.25 x 18.25 , cut in half diagonally twice

2 squares, 9 3/8" x 9 3/8", cut in half diagonally

For border

9 strips, 4.5" x WOF (approx. 42")

For binding

9 strips, 2.5" x WOF (approx. 42")

“Starlight”

Page 5

Block Assembly

Block A

For blocks with dark edge and center

Refer to Illustration A

1. Make 8 half square triangles with the $2\frac{7}{8}$ " squares of light and dark fabrics.

Refer to Illustration B

2. Make 8 flying geese with the one – 5.25 " light square and 4 – $3\frac{3}{8}$ " dark squares.

Refer to Illustration C

3. Piece the block as illustrated.



Block 1A

Dark Fabric 39045-1 Caramel

Light Fabric 39044-4 Honey

MAKE (3)



Block 4A

Dark Fabric 39046-1 Caramel

Light Fabric 39042-4 Honey

MAKE (3)



Block 2A

Dark Fabric 39041-1 Caramel

Light Fabric 39049-3 Latte

MAKE (2)



Block 3A

Dark Fabric 39042-1 Caramel

Light Fabric 39046-4 Honey

MAKE (2)

“Starlight”

Page 6

Block Assembly

Block B

For blocks with light edge and center

Refer to Illustration A

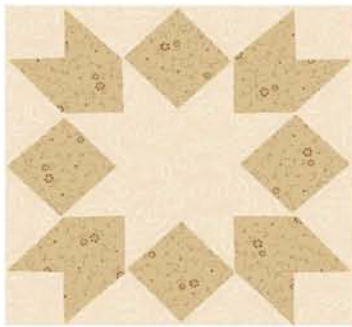
1. Make 8 half square triangles with the 2 7/8" squares of light and dark fabrics.

Refer to Illustration B

2. Make 8 flying geese with the one – 5.25" dark square and 4 – 3 3/8" light squares.

Refer to Illustration C

3. Piece the block as illustrated.



Block 1B

Light Fabric 39040-3 Latte
Dark Fabric 39047-2 Mocha

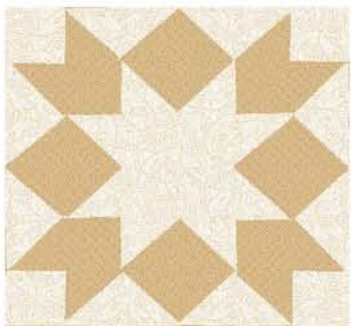
MAKE (3)



Block 4B

Light Fabric 39044-5 Cream
Dark Fabric 39045-1 Caramel

MAKE (2)



Block 2B

Light Fabric 39048-5 Cream
Dark Fabric 39043-1 Caramel

MAKE (2)



Block 3B

Light Fabric 39047-4 Honey
Dark Fabric 39040-1 Caramel

MAKE (3)

“Starlight”

Page 7

Illustration A

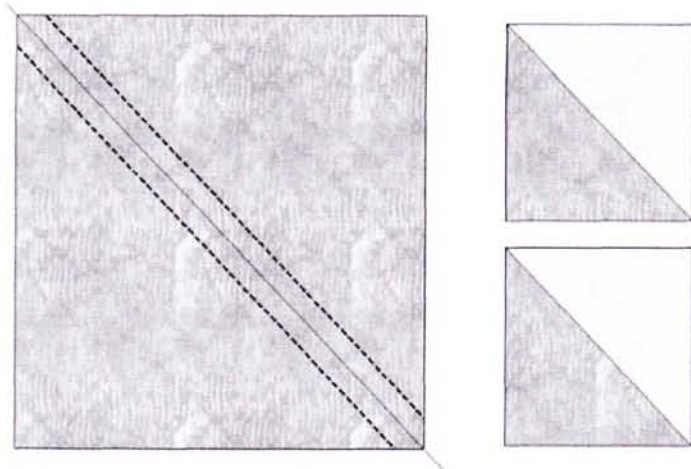
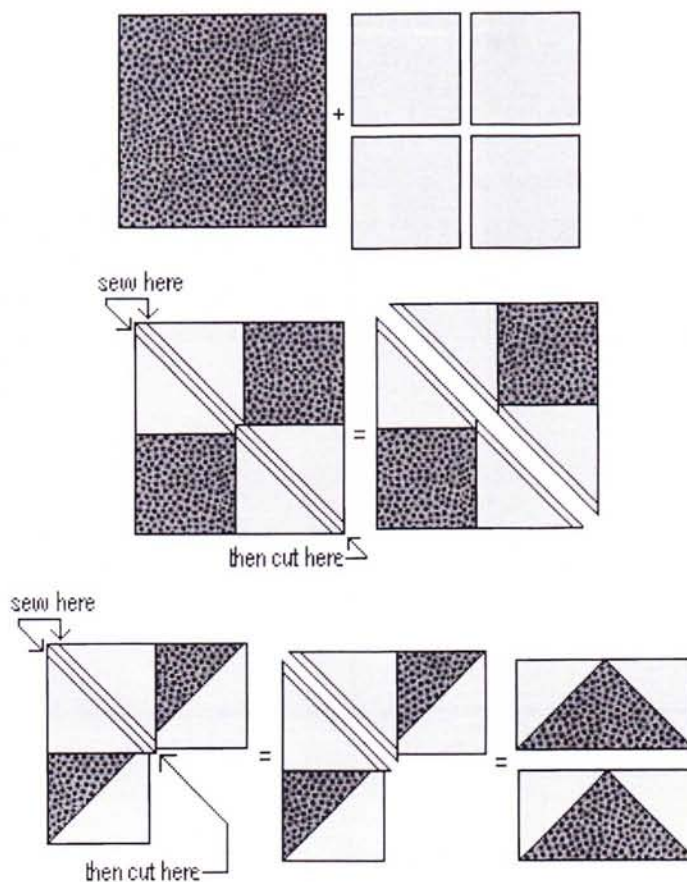


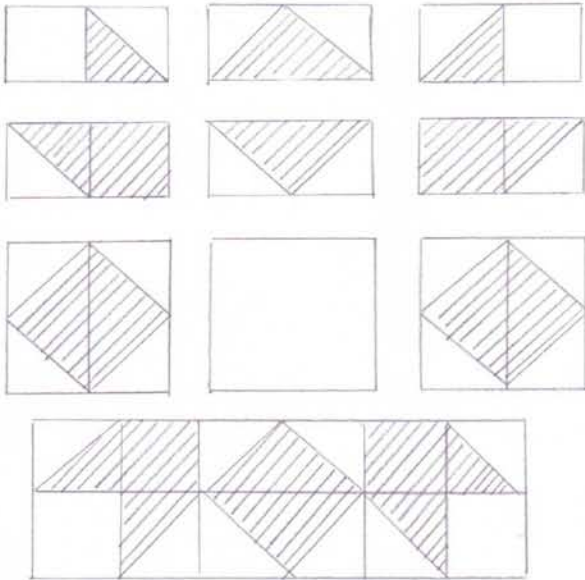
Illustration B



"Starlight"

Page 8

Illustration C



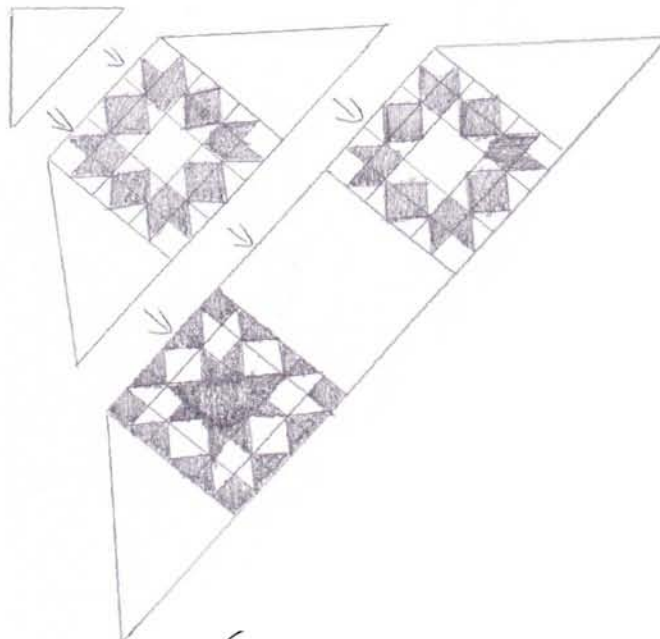
Sew blocks together according to diagram to the left.

QUILT ASSEMBLY

Refer to illustration D

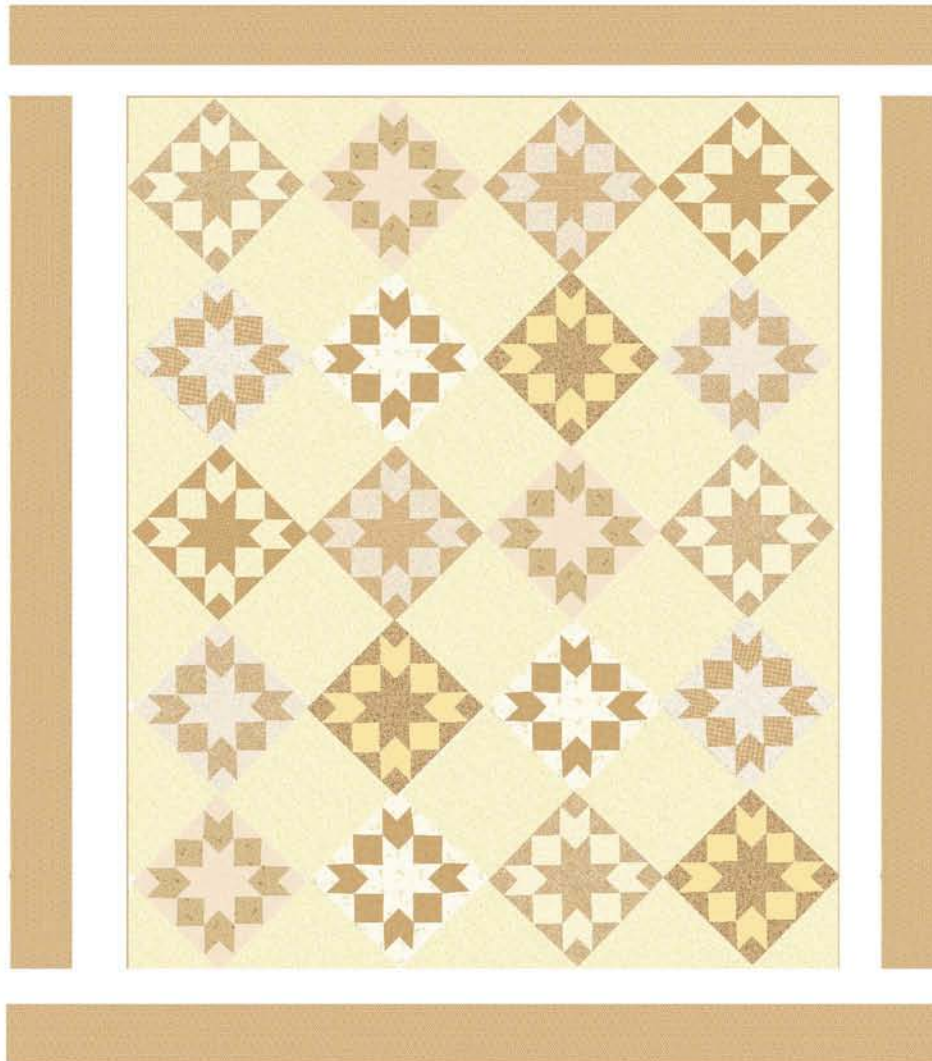
4. Sew the blocks together in rows, alternating a block with a setting triangle or background square.
5. Attach the borders, starting with the sides, and then finishing with the top and bottom.
6. Refer to the diagram on page 3 for the placement of the blocks.

Illustration D



“Starlight”

Page 9



Attach side and top/bottom borders. Quilt and bind as desired.

ENJOY!!

Be sure to visit www.windhamfabrics.com to check for pattern updates,
see the complete collection and to download other Free Projects!