

Gabrielle's Wish

Designed by Mary Koval
Featuring the Gabrielle circa 1870 Collection by Mary Koval
Size: 82 x 82"



Check www.windhamfabrics.com Free Project section to see if there are any pattern updates before you start your quilt

WINDHAM *W* **FABRICS**

812 Jersey Ave ~ Jersey City, NJ 07310 ~ 201.659.0444 ~ FAX: 201.659.9719
www.windhamfabrics.com email: retail@windhamfabrics.com

Gabrielle's Wish

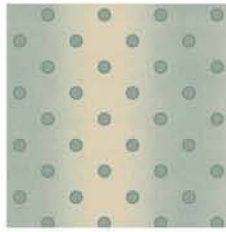
Designed by Mary Koval
Featuring the Gabrielle circa 1870 Collection by Mary Koval
Size: 82 x 82"



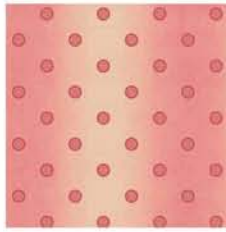
36428-2



36428-3



36429-3



36429-4



36429-6



36430-1



36430-3



36430-6



36431-5



36431-6



36431-7



36432-1



36432-7



36433-1



36433-2



36433-6



36434-5



36434-7



36435-3



36435-5

Fabric Requirements:

2 1/2 yards 36428-2 Cream
2 yards 36428-3 Blue
2 3/4 yards 36435-5 Red (includes binding)
1 1/4 yards 36433-2 Cream
16 assorted fat quarters

Backing 5 1/2 Yards

WINDHAM FABRICS



Cutting Directions

- 36435-5 – Red
 - Cut (1) 4 ½" WOF Strip
 - Sub-cut (5) 4 ½" Squares
-
- Cut (18) 3 ½" WOF Strips
 - Strip together, end to end
 - (4) sets of 2 Strips
 - (4) sets of 3 Strips
 - Set aside for Borders 1 and 3
- Cut (10) 2 ½" WOF Strips
- Strip together end to end. Set aside for Binding
-
- 36428-2 – Cream
 - Cut (10) 8 ½" WOF Strips
 - Strip together, end to end
 - (2) Sets of 2 Strips
 - (2) Sets of 3 Strips
 - Set aside for Border 2
-
- 36430-1 – Brown (A)
 - Cut (3) 2 ½" X 22" (width of fat quarter)
 - Sub-Cut (12) 2 ½" x 4" Rectangles
-
- 36433-2 – Cream (B)
 - Cut (16) 2 ½" WOF Strips
 - Sub-Cut (256) 2½" x 2½" Squares
-
- 36428-3 – Blue
 - Cut (1) 18" WOF Strip (C)
 - Sub-cut (2) 18" Squares then cut each square diagonally to make 4 triangles
-
- Cut (8) 6 ½" WOF Strips
 - Cut (4) Strips 6 ½" x 26" (D)
 - Cut (4) Strips 6 ½" x 32" (E)
-
- 16 Assorted Fat Quarters
 - Cut (2) 2 ½" x 22" (width of fat quarter) from each of the fat quarters.
 - Sub-Cut (8) 2 ½" x 4" Rectangles (yields 120 rectangles)



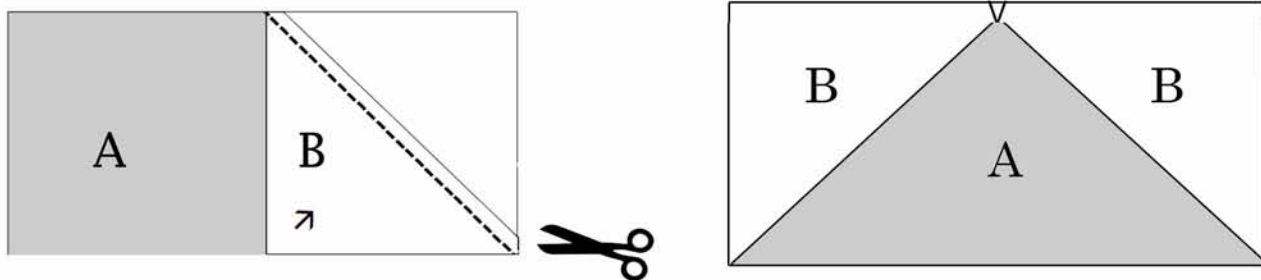
Construction:

1. Prepare 128 flying geese:

(12) 36430-1 Brown $2\frac{1}{2}" \times 4"$ Rectangles (A) with (24) 36433-2 – Cream $2\frac{1}{2}" \times 2\frac{1}{4}"$ Rectangles (B)
 (116) Assorted $2\frac{1}{2}" \times 4"$ Rectangles (A) with (232) 36433-2 – Cream (B) $2\frac{1}{4}" \times 2\frac{1}{2}"$ Rectangles (B)

- Place a "B" rectangle on one end of the "A" rectangle, right sides together with the $2\frac{1}{2}"$ sides aligning.
- Draw a diagonal line on the wrong side of (B) rectangle from the bottom corner to the top center.
- Stitch on the line.
- Cut underneath fabric, leaving a $\frac{1}{4}"$ seam allowance
- Press to the top of the block
- Finished block should measure $2\frac{1}{2}" \times 4"$
- Repeat steps a.-f. on the other side of (A)

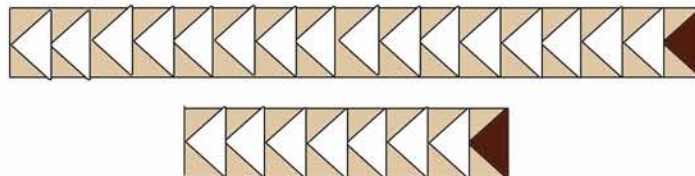
Diagram 1



2. Arrange flying geese sets

- Stitch (4) rows of 15 assorted flying geese with (1) brown flying geese on the right (16 total)
- Stitch (4) rows of 7 assorted flying geese with (1) brown flying geese on the right (8 total)
- Press to the point of the geese.

Diagram 2



3. Construct 4 sections as shown in Diagram 3

- Sew (C) to a set of 8 flying geese
- Sew a set of 8 flying geese to a 36435-5 Red $4\frac{1}{2}"$ Square
- Sew these two sets together
- Sew (D) to the right side of the set
- Sew (E) to the bottom of the set

Note: Begin stitching rows from the center of the quilt, as outside of the rows will not match.
 Overages allowed for squaring up the quilt.

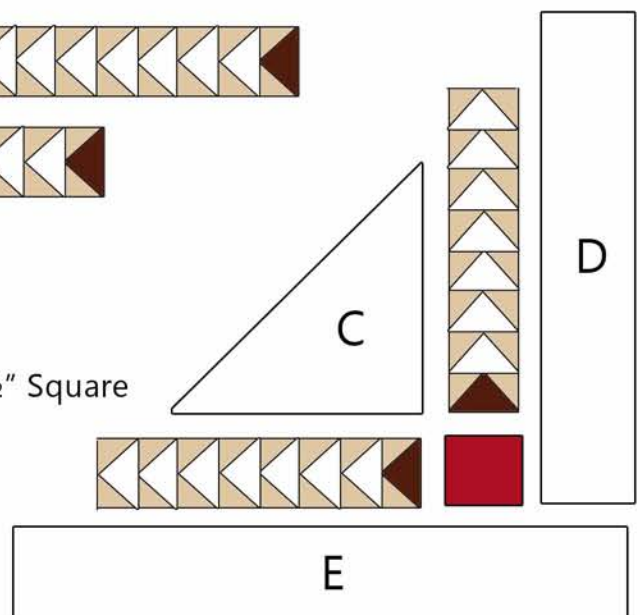


Diagram 3

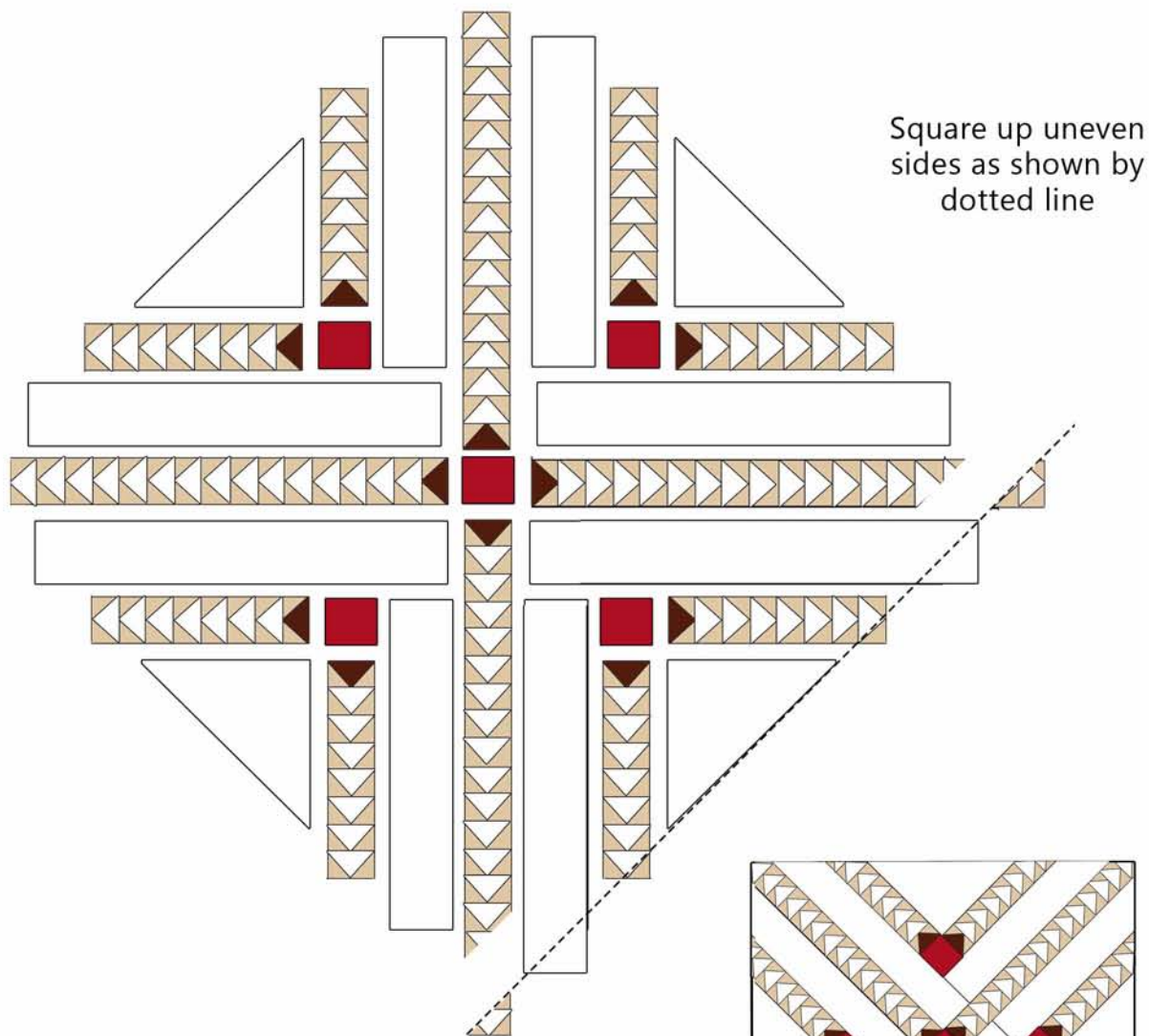
Gabrielle's Wish

Page 4

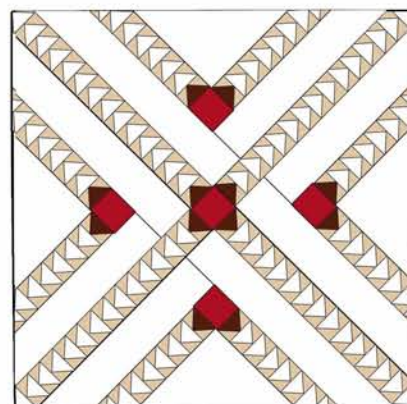
4. Follow the Center Assembly Diagram 4 to assemble the quilt

Note: Begin stitching rows from the center of the quilt, as outside of the rows will not match. Overages allowed for squaring up the quilt.

CENTER LAYOUT DIAGRAM 4



5. Square up the quilt and add borders as shown on the Final Assembly Diagram 5



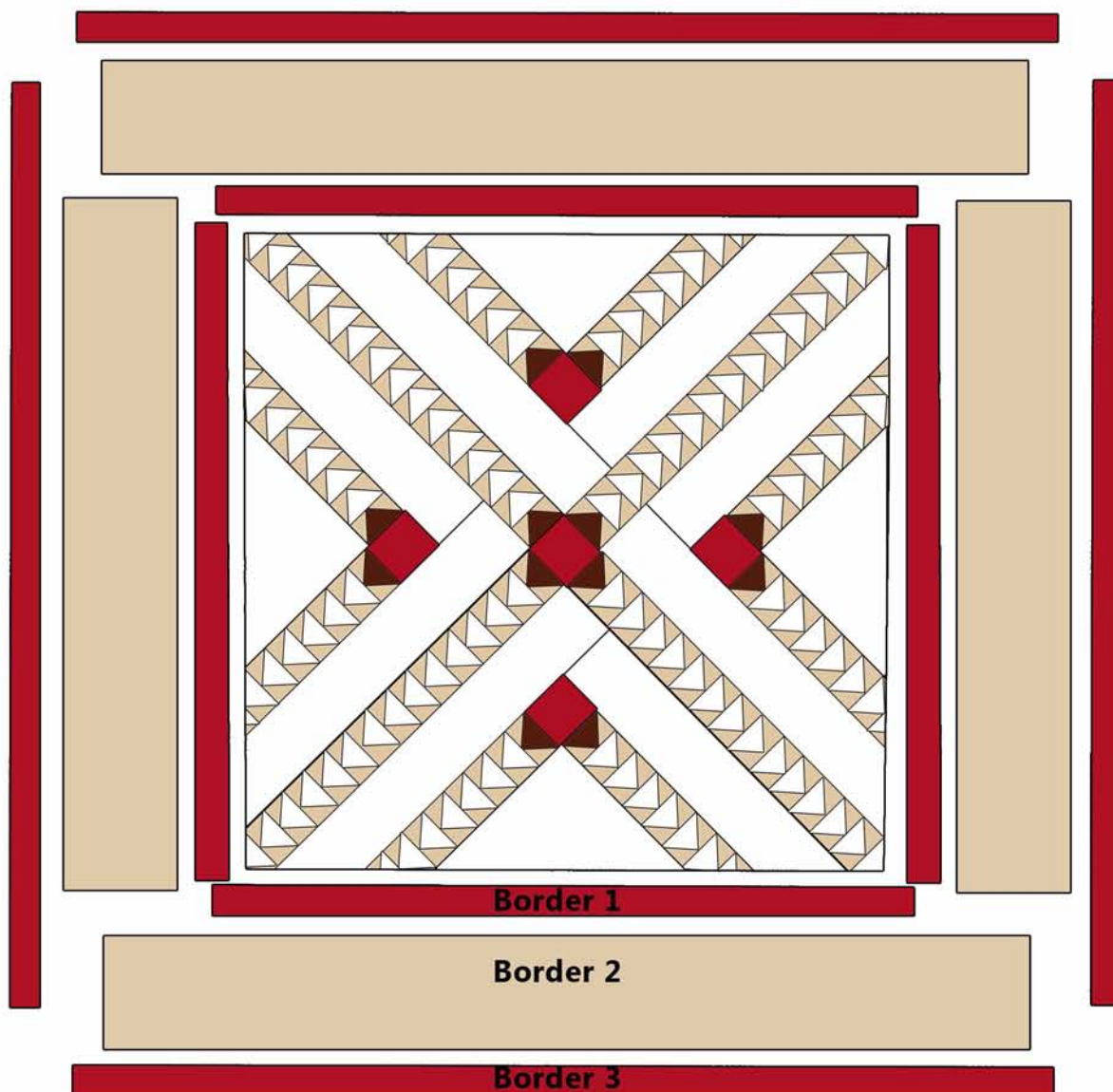
FINAL LAYOUT



Gabrielle's Wish

Page 5

FINAL ASSEMBLY DIAGRAM 5



6. Quilt, Bind and **ENJOY!**

Be sure to visit www.windhamfabrics.com to see the complete collection
and to download other Free Projects

WINDHAM FABRICS

