

Evening Rose

REVISED

Designed by Betty New
Featuring the Parlor Collection by Whistler Studios
Size: 78.5" x 78.5"



Feel free to download additional copies of this and other projects by visiting our website: www.windhamfabrics.com

WINDHAM FABRICS

812 Jersey Ave ~ Jersey City, NJ 07310 ~ 201.659.0444 ~ FAX: 201.659.9719
www.windhamfabrics.com email: retail@windhamfabrics.com

Evening Rose



Designed by Betty New
Featuring the Parlor Collection by Whistler Studios
Size: 78.5" x 78.5"

Fabric Requirements

32552-X Multi	1 yard
32553-1 Black	2 + ¼ yards
32553-2 Tan	1 yard
32555-1 Black	1 + ½ yards
32556-2 Tan	¼ yards
32556-4 Pink	¼ yards
32556-5 Turquoise	¼ yards
32557-1 Black	2 yards (includes binding)
32557-2 Tan	1 + ¼ yards
32558-2 Tan	2 yards
Backing	4 + ¾ yards



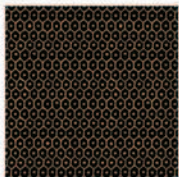
32552-X



32553-1



32553-2



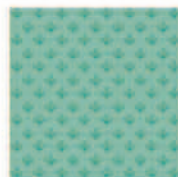
32555-1



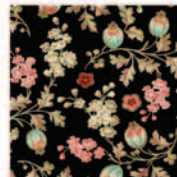
32556-2



32556-4



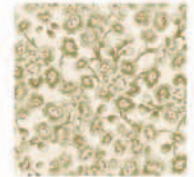
32556-5



32557-1



32557-2



32558-2

Fabric Cutting Instructions:

Starch and press all fabrics before cutting.

Fusible web such as Steam-A-Seam 2 and light weight stabilizer needed for raw edge appliqué.

32552-X Multi floral

- Five 9 7/8" x 9 7/8" square, then cut diagonally for triangles
 - fussy cut to include group of roses as pictured
 - discard upper portion
- Four 2 ½" X 2 ½" squares
 - fussy cut to include small flowers
- Eight 2 ½" X 2 ½" squares, then cut diagonally for triangles
 - fussy cut to include small flowers
 - discard upper portion



A



B



C

32553-1 Black with turquoise stripe

Four 5 ½" X Length of fabric (fussy cut with blue stripe in the center)

Two 4 ½" X Length of fabric (fussy cut with blue stripe in center)

*Then sub cut into fifty-six 2 ½" X 4 ½" rectangles

Evening Rose



Page 2

32553-2 Tan with black stripe
Eight 3 1/2" X Width of Fabric

32555-1 Black with tan dots
Six 2 1/2" X WOF
Seven 1 1/2" X WOF
Sixteen 2 1/2" X 15 1/2" rectangles
Four vines

32556-2 Tan tone on tone
Two 4 1/4" X 4 1/4" squares
Two 3 7/8" X 3 7/8" squares; then cut in half diagonally forming half-square triangles

32556-4 Pinktone on tone and 32556-5 Turquoise tone on tone
Three 4 1/4" X 4 1/4" squares
Three 3 7/8" X 3 7/8" squares; then cut in half diagonally forming half-square triangles

32557-1 Black small multi floral
Twenty-five 4 1/4" X 4 1/4" squares
Four 3 1/2" X 3 1/2" squares
Five 3 7/8" X 3 7/8" squares; then cut five of these in half diagonally forming half-square triangles.
Fifty-six 2 1/2" X 4 1/2" rectangles
Twenty leaves

32557-2 Tan small multi floral
One 22 1/2" X 22 1/2" square for side setting triangles
*Then sub cut diagonally twice making 4 quarter-square triangles
Two 11 1/2" X 11 1/2" squares
*Then sub cut diagonally making 4 half-square triangles

32558-2 Tan tone on tone floral
Ten 3 1/2" X 9 1/2" rectangles
Three 6 7/8" X 6 7/8" squares; then cut in half diagonally forming half-square triangles
Eighteen 4 1/4" X 4 1/4" squares
Two hundred twenty-four 2 1/2" X 2 1/2" squares

Sewing Instructions

Half-Square Triangle Units (HST)

All units are made by using two 4 1/4" X 4 1/4" squares (black plus light tan, dark tan, pink, or turquoise).

Draw a diagonal line on the back of one square. Place with right sides together and stitch 1/4" away from the diagonal line. Cut on the diagonal line, open, and press toward the black fabric. Trim down to exactly 3 1/2" X 3 1/2".



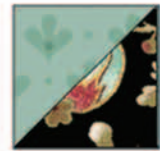
Make 35 using 18
black squares and 18
light tan squares.
(Yields one extra.)



Make 6 using 3
black squares
and 3 pink
squares.



Make 3 using 2
black squares and
2 dark tan squares.
(Yields one extra.)



Make 6 using 3
black squares and
3 turquoise
squares.

Evening Rose



Page 3

Flying Geese Units

All units are made using one black 2 1/2" X 4 1/2" rectangle and two light tan 2 1/2" X 2 1/2" squares. Mark a diagonal line on the back of each light tan square. Place one light tan square on top of a black rectangle with right sides together and aligning corners. Stitch on the diagonal line. Press the tan block to the corner, lift and trim excess fabric underneath. Repeat with the remaining corner to complete one unit.



Make 56 units using 56 black rectangles and 128 light tan squares.



Make 56 units using 56 black rectangles with stripe and 128 light tan squares.

Raw Edge Applique: Vines and Leaves

Follow manufacturer directions for using fusible webbing.

Trace four vines from the pattern given, fuse to the back of black fabric 32555-1 and cut out on the line.

Trace twenty leaves, fuse to the back of black floral fabric 32557-1 and cut out on the lines.

Apply fusible to the back of four flower groups from fabric 32552-X and fussy cut.

Refer to the diagram and fuse the vines and leaves to the four quarter-square triangles. Place a piece of stabilizer on the back of the triangle and stitch around the vines and leaves with a blanket stitch using black thread. Fuse flowers on top of vines and stitch around the flowers using a blanket stitch. Remove stabilizer.



Take care while handling bias edges of the quarter-square triangles so not to stretch.

Basket blocks



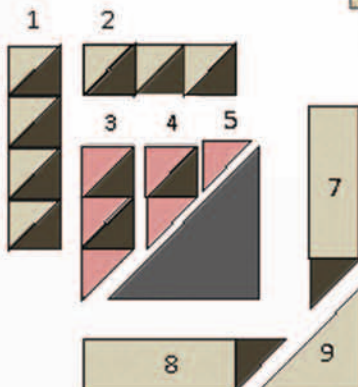
Make two.



Make two.



Make one.



Assembly diagram for the pink block.

Row 1: Connect four HST units vertically as shown in the diagram.

Row 2: Connect three HST units horizontally as shown.

Row 3: Connect two HST units and one half-square triangle.

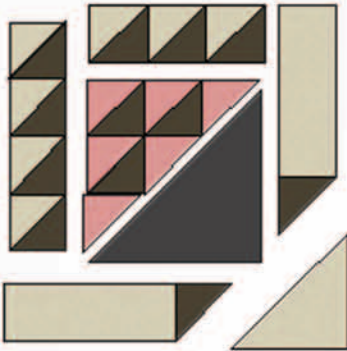
Row 4: Connect one HST unit and one half-square triangle.

Rows 7 and 8: Connect one 3 1/2" X 9 1/2" rectangle and one black half-square triangle as shown.

Evening Rose



Page 4



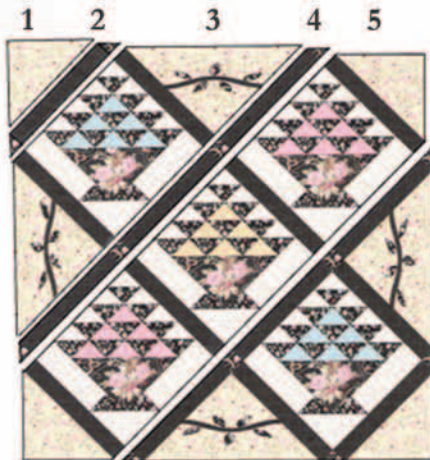
Next, connect rows 3, 4, and 5 to form a larger triangle unit as shown. Attach piece 6 to the triangle unit. Piece 6 is a half-square triangle cut from a $9\frac{1}{2}$ " fussy square with a group of flowers. This new unit should measure $9\frac{1}{2}$ " X $9\frac{1}{2}$ ".

Then attach row 2 above, and row 1 to the left. This new unit should measure $12\frac{1}{2}$ " X $12\frac{1}{2}$ ". Next attach row 7 and row 8.

Last, attach piece 9 which is a half-square triangle cut from a $6\frac{7}{8}$ " square cut previously. **The basket block should now measure $15\frac{1}{2}$ " X $15\frac{1}{2}$ ".**

****Repeat the instructions for remaining basket blocks.**

Center Panel Assembly



Refer to the diagram at left.

Row 1: One half-square triangle cut from $11\frac{1}{2}$ " square previously.

Row 2: Attach a half-square triangle to each end of a $2\frac{1}{2}$ " X $15\frac{1}{2}$ " rectangle (sashing) as shown.

Row 3: Attach sashing and vine pieces to blue basket block.

Row 4: Attach three sashing pieces, two squares, and two half-square triangles as shown.

Row 5: Attach sashing and two half-square triangle pieces to pink and tan basket blocks as shown.

Repeat rows 4, 3, 2, and 1 for the lower right portion.

Connect all rows as shown in the diagram.

The center panel should measure $48\frac{1}{2}$ " X $48\frac{1}{2}$ ".

Borders

Refer to the diagram on the following page.

Border 1: Black with tan dots

Using the six $2\frac{1}{2}$ " X WOF strips, connect all six using a bias seam. Then cut the following:

Two $2\frac{1}{2}$ " X $48\frac{1}{2}$ " and attach to the top and bottom of the center panel. Press toward the black.

Two $2\frac{1}{2}$ " X $52\frac{1}{2}$ " and attach to the left and right sides of the center panel. Press toward the black.

Border 2: Flying Geese

For the top and bottom, connect 26 flying geese by alternating those with a stripe and those with black floral centers. Start from left to right with a stripe as shown in the diagram. Check measurements along the way. Sew two together and check measurements. Sew groups of twos, and fours, etc.

2 flying geese = $4\frac{1}{2}$ "

4 flying geese = $8\frac{1}{2}$ "

8 flying geese = $16\frac{1}{2}$ " and so on.

For the left and right sides, connect 30 flying geese. Note that bottom left and the upper right will have two units facing a different direction. See diagram. **The quilt should now measure $60\frac{1}{2}$ " X $60\frac{1}{2}$ ".**

Evening Rose



Page 5

Border 3: Black with tan dots

Using the seven 1 1/2" X WOF strips, connect all seven using a bias seam. Then cut the following:

Two 1 1/2" X 60 1/2" and attach to the top and bottom of the quilt.

Two 1 1/2" X 62 1/2" and attach to the left and right sides of the quilt.

Border 4: Tan with black stripes

Using the eight 3 1/2" X WOF strips, connect by twos using a straight seam. To make the strip appear seamless, fold one piece under near a black stripe and place it on top of a second strip matching the motifs. Pin in place (or glue using a thin line of school glue), open, and stitch in the fold. Make four long strips, then cut the following:

Four 3 1/2" X 62 1/2" and attach a strip to the top and bottom of the quilt.

Sew a 3 1/2" X 3 1/2 inch black multi floral to each end of the remaining two strips. Attach these borders to the left and right sides of the quilt.

Border 5: Black with turquoise stripe

Use the 5 1/2" X Length of Fabric strips. Mark the center of each strip and the center of the edges of the quilt. Also mark each corner of the quilt 1/4" in from the edge. Stitch the borders to each side from the 1/4" marked points. At each corner, fold one border piece under in a 45 degree angle, place on top of adjacent border carefully matching stripes, pin or glue in place, press, open and stitch in the fold. Open the seams, press, and trim excess fabric from underneath.

Quilt Assembly



*The last borders will be mitered, although the diagram does not show mitered corners. Roses on the vines are not shown in the above diagram.

WINDHAM/FABRICS

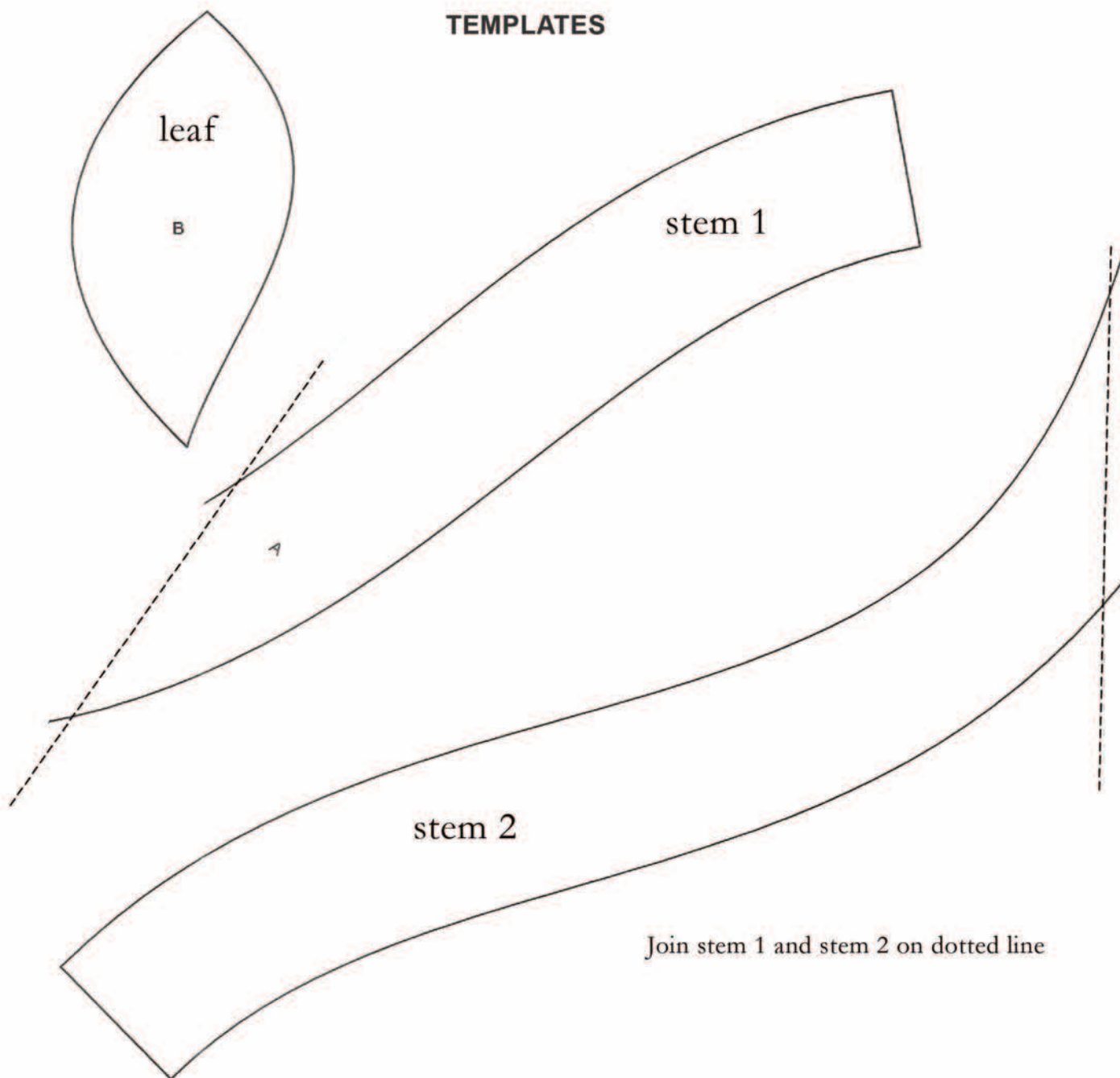
Evening Rose



Page 6

Finishing: Layer, baste and quilt. Use the remaining black with small multi floral print for binding.

TEMPLATES



Join stem 1 and stem 2 on dotted line

THIS IS A VIRTUALLY DESIGNED PATTERN SO NO SAMPLE HAS BEEN MADE PRIOR TO PUBLICATION
Be sure to visit www.windhamfabrics.com to see the complete collection
and to download this and other Free Projects

WINDHAM FABRICS